

Bis[μ -4-(dimethylamino)benzoato]- $\kappa^3 O, O': O; \kappa^3 O: O, O'$ -bis[aqua[4-(dimethylamino)benzoato- $\kappa^2 O, O'$]- (nicotinamide- κN^1)]cadmium(II)

Tuncer Hökelek,^{a*} Yasemin Süzen,^b Barış Tercan,^c Özgür Aybirdi^d and Hacı Necefoğlu^d

^aDepartment of Physics, Hacettepe University, 06800 Beytepe, Ankara, Turkey,

^bDepartment of Chemistry, Faculty of Science, Anadolu University, 26470

Yenibağlar, Eskişehir, Turkey, ^cDepartment of Physics, Karabük University, 78050,

Karabük, Turkey, and ^dDepartment of Chemistry, Kafkas University, 63100 Kars,

Turkey

Correspondence e-mail: merzifon@hacettepe.edu.tr

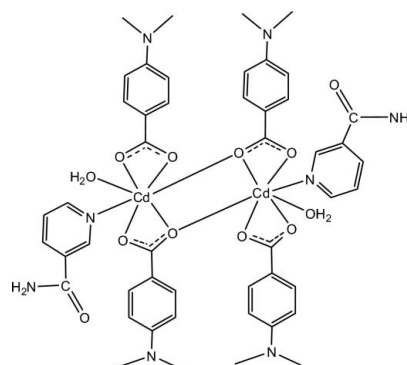
Received 27 May 2010; accepted 7 June 2010

Key indicators: single-crystal X-ray study; $T = 100$ K; mean $\sigma(C-C) = 0.003$ Å; R factor = 0.022; wR factor = 0.056; data-to-parameter ratio = 17.9.

In the centrosymmetric dimeric Cd^{II} title compound, $[Cd_2(C_9H_{10}NO_2)_4(C_6H_6N_2O)_2(H_2O)_2]$, each seven-coordinated Cd^{II} atom is chelated by the carboxylate groups of the two 4-(dimethylamino)benzoate (DMAB) anions; the two monomeric units are bridged through the two O atoms of the two carboxyl groups. In the crystal structure, intermolecular $O-H\cdots O$, $N-H\cdots O$ and $C-H\cdots O$ hydrogen bonds link the molecules into a three-dimensional network. $\pi-\pi$ contacts between the pyridine rings [centroid-centroid distance = $3.974(1)$ Å] may further stabilize the structure. Weak $C-H\cdots\pi$ interactions are also observed.

Related literature

For the applications of transition metal complexes with molecules in biological systems, see: Antolini *et al.* (1982). Benzoic acid derivatives such as 4-aminobenzoic acid are used extensively as bifunctional organic ligands in coordination chemistry due to their various coordination modes, see: Amirasanov *et al.* (1979); Chen & Chen (2002); Hauptmann *et al.* (2000). In pellagra disease, niacin deficiency leads to loss of copper from the body with high serum and urinary copper levels, see: Krishnamachari (1974). The nicotinic acid derivative *N,N*-diethylnicotinamide (DNA) is an important respiratory stimulant, see: Bigoli *et al.* (1972). For structure-function-coordination relationships of the arylcarboxylate ion in Mn^{II} complexes of benzoic acid derivatives, see: Adiwidjaja *et al.* (1978); Antsyshkina *et al.* (1980); Catterick *et al.* (1974); Shnulin *et al.* (1981). For related structures, see: Greenaway *et al.* (1984); Hökelek & Necefoğlu (1996); Hökelek *et al.* (2009a,b,c,d).



Experimental

Crystal data

$[Cd_2(C_9H_{10}NO_2)_4(C_6H_6N_2O)_2 \cdot (H_2O)_2]$

$M_r = 1161.83$

Triclinic, $P\bar{1}$

$a = 9.5453(2)$ Å

$b = 10.2372(2)$ Å

$c = 13.5697(3)$ Å

$\alpha = 74.102(3)^\circ$

$\beta = 79.479(3)^\circ$

$\gamma = 66.547(2)^\circ$

$V = 1165.85(5)$ Å³

$Z = 1$

Mo $K\alpha$ radiation

$\mu = 0.99$ mm⁻¹

$T = 100$ K

$0.36 \times 0.24 \times 0.13$ mm

Data collection

Bruker Kappa APEXII CCD area-detector diffractometer

Absorption correction: multi-scan (SADABS; Bruker, 2005)

$T_{\min} = 0.752$, $T_{\max} = 0.879$

21249 measured reflections

5862 independent reflections

5498 reflections with $I > 2\sigma(I)$

$R_{\text{int}} = 0.026$

Refinement

$R[F^2 > 2\sigma(F^2)] = 0.022$

$wR(F^2) = 0.056$

$S = 1.06$

5862 reflections

328 parameters

H atoms treated by a mixture of independent and constrained refinement

$\Delta\rho_{\text{max}} = 0.67$ e Å⁻³

$\Delta\rho_{\text{min}} = -0.49$ e Å⁻³

Table 1

Selected bond lengths (Å).

Cd1—O1	2.3511 (12)	Cd1—O4 ⁱ	2.5762 (12)
Cd1—O2	2.3362 (12)	Cd1—O6	2.3170 (12)
Cd1—O3	2.5705 (13)	Cd1—N3	2.3339 (14)

Symmetry code: (i) $-x, -y, -z + 1$.

Table 2

Hydrogen-bond geometry (Å, °).

$Cg2$ and $Cg3$ are the centroids of the C11–C16 and N3/C19–C23 rings, respectively.

$D-H\cdots A$	$D-H$	$H\cdots A$	$D\cdots A$	$D-H\cdots A$
N4—H4A \cdots O3 ⁱⁱⁱ	0.86	2.07	2.893 (2)	160
N4—H4B \cdots O1 ⁱ	0.86	2.24	2.993 (2)	147
O6—H61 \cdots O2 ⁱⁱⁱ	0.79 (3)	1.97 (3)	2.749 (2)	176 (2)
O6—H62 \cdots O5 ^{iv}	0.82 (3)	1.91 (3)	2.703 (2)	163 (3)
C19—H19 \cdots O1 ⁱ	0.93	2.44	3.302 (2)	155
C23—H23 \cdots O2 ⁱⁱⁱ	0.93	2.57	3.372 (2)	144
C9—H9A \cdots Cg3 ^v	0.96	2.61	3.434 (2)	144
C17—H17B \cdots Cg2 ^{vi}	0.96	2.98	3.887 (3)	159

Symmetry codes: (i) $-x, -y, -z + 1$; (ii) $x, y - 1, z$; (iii) $-x + 1, -y, -z + 1$; (iv) $x, y + 1, z$; (v) $x, y, z + 1$; (vi) $-x, -y + 1, -z$.

Data collection: *APEX2* (Bruker, 2007); cell refinement: *SAINT* (Bruker, 2007); data reduction: *SAINT*; program(s) used to solve structure: *SHELXS97* (Sheldrick, 2008); program(s) used to refine structure: *SHELXL97* (Sheldrick, 2008); molecular graphics: *Mercury* (Macrae *et al.*, 2006); software used to prepare material for publication: *WinGX* (Farrugia, 1999) and *PLATON* (Spek, 2009).

The authors are indebted to Anadolu University and the Medicinal Plants and Medicine Research Centre of Anadolu University, Eskişehir, Turkey, for use of the X-ray diffractometer. This work was supported financially by Kafkas University Research Fund (grant No. 2009-FEF-03).

Supplementary data and figures for this paper are available from the IUCr electronic archives (Reference: XU2771).

References

- Adiwidjaja, G., Rossmannith, E. & Küppers, H. (1978). *Acta Cryst.* **B34**, 3079–3083.
- Amiraslanov, I. R., Mamedov, Kh. S., Movsumov, E. M., Musaev, F. N. & Nadzhafov, G. N. (1979). *Zh. Strukt. Khim.* **20**, 1075–1080.
- Antolini, L., Battaglia, L. P., Corradi, A. B., Marcotrigiano, G., Menabue, L., Pellacani, G. C. & Saladini, M. (1982). *Inorg. Chem.* **21**, 1391–1395.
- Antsyshkina, A. S., Chiragov, F. M. & Poray-Koshits, M. A. (1980). *Koord. Khim.* **15**, 1098–1103.
- Bigoli, F., Braibanti, A., Pellinghelli, M. A. & Tiripicchio, A. (1972). *Acta Cryst.* **B28**, 962–966.
- Bruker (2005). *SADABS*. Bruker AXS Inc. Madison, Wisconsin, USA.
- Bruker (2007). *APEX2* and *SAINT*. Bruker AXS Inc., Madison, Wisconsin, USA.
- Catterick, J., Hursthouse, M. B., New, D. B. & Thornton, P. (1974). *J. Chem. Soc. Chem. Commun.* pp. 843–844.
- Chen, H. J. & Chen, X. M. (2002). *Inorg. Chim. Acta*, **329**, 13–21.
- Farrugia, L. J. (1999). *J. Appl. Cryst.* **32**, 837–838.
- Greenaway, F. T., Pezeshk, A., Cordes, A. W., Noble, M. C. & Sorenson, J. R. J. (1984). *Inorg. Chim. Acta*, **93**, 67–71.
- Hauptmann, R., Kondo, M. & Kitagawa, S. (2000). *Z. Kristallogr. New Cryst. Struct.* **215**, 169–172.
- Hökelek, T., Dal, H., Tercan, B., Aybirdi, Ö. & Necefoğlu, H. (2009b). *Acta Cryst.* **E65**, m627–m628.
- Hökelek, T., Dal, H., Tercan, B., Aybirdi, Ö. & Necefoğlu, H. (2009c). *Acta Cryst.* **E65**, m1037–m1038.
- Hökelek, T., Dal, H., Tercan, B., Aybirdi, Ö. & Necefoğlu, H. (2009d). *Acta Cryst.* **E65**, m1365–m1366.
- Hökelek, T. & Necefoğlu, H. (1996). *Acta Cryst.* **C52**, 1128–1131.
- Hökelek, T., Yılmaz, F., Tercan, B., Gürgen, F. & Necefoğlu, H. (2009a). *Acta Cryst.* **E65**, m1416–m1417.
- Krishnamachari, K. A. V. R. (1974). *Am. J. Clin. Nutr.* **27**, 108–111.
- Macrae, C. F., Edgington, P. R., McCabe, P., Pidcock, E., Shields, G. P., Taylor, R., Towler, M. & van de Streek, J. (2006). *J. Appl. Cryst.* **39**, 453–457.
- Sheldrick, G. M. (2008). *Acta Cryst.* **A64**, 112–122.
- Shnulin, A. N., Nadzhafov, G. N., Amiraslanov, I. R., Usabaliev, B. T. & Mamedov, Kh. S. (1981). *Koord. Khim.* **7**, 1409–1416.
- Spek, A. L. (2009). *Acta Cryst.* **D65**, 148–155.

supplementary materials

Acta Cryst. (2010). E66, m782-m783 [doi:10.1107/S160053681002163X]

Bis[μ -4-(dimethylamino)benzoato]- $\kappa^3 O, O': O; \kappa^3 O: O, O'$ -bis{aqua[4-(dimethylamino)benzoato- $\kappa^2 O, O'$](nicotinamide- κN^1)}cadmium(II)}

T. Hökelek, Y. Süzen, B. Tercan, Ö. Aybirdi and H. Necefoglu

Comment

Transition metal complexes with biochemical molecules show interesting physical and/or chemical properties, through which they may find applications in biological systems (Antolini *et al.*, 1982). Some benzoic acid derivatives, such as 4-aminobenzoic acid, have been extensively reported in coordination chemistry, as bifunctional organic ligands, due to the varieties of their coordination modes (Chen & Chen, 2002; Amiraslanov *et al.*, 1979; Hauptmann *et al.*, 2000). Nicotinamide (NA) is one form of niacin. A deficiency of this vitamin leads to loss of copper from the body, known as pellagra disease. Victims of pellagra show unusually high serum and urinary copper levels (Krishnamachari, 1974). The nicotinic acid derivative *N,N*-Diethylnicotinamide (DENA) is an important respiratory stimulant (Bigoli *et al.*, 1972).

The structure-function-coordination relationships of the arylcarboxylate ion in Cd^{II} complexes of benzoic acid derivatives may also change depending on the nature and position of the substituted groups on the benzene ring, the nature of the additional ligand molecule or solvent, and the pH and temperature of synthesis as in $Mn(II)$ complexes (Shnulin *et al.*, 1981; Antsyshkina *et al.*, 1980; Adiwidjaja *et al.*, 1978). When pyridine and its derivatives are used instead of water molecules, the structure is completely different (Catterick *et al.*, 1974). We report herein the synthesis and the structure of the title compound, (I).

The title compound, (I), consists of dimeric units located around a crystallographic symmetry centre and made up of two Cd cations, four 4-(dimethylamino)benzoato (DMAB) anions, two nicotinamide (NA) ligands and two water molecules (Fig. 1). Each $Cd(II)$ unit is chelated by the carboxylate O atoms of the two DMAB anions, and the two monomeric units are bridged through the two oxygen atoms of the two carboxylate groups about an inversion center. The coordination number of each Cd^{II} atom is seven. The $Cd1 \cdots Cd1^i$ distance is 3.8121 (2) Å and $O4-Cd1-O4^i$ angle is 76.87 (4)° (symmetry code: (i) $-x, -y, 1 - z$).

The average $Cd-O$ bond length (Table 1) is 2.4302 (12) Å, and the Cd atom is displaced out of the least-squares planes of the carboxylate groups (O1/C1/O2) and (O3/C10/O4) by 0.4160 (1) and 0.6395 (1) Å, respectively. In (I), the $O1-Cd1-O2$ and $O3-Cd1-O4$ angles are 55.96 (4) and 53.78 (4)°, respectively. The corresponding $O-M-O$ (where M is a metal) angles are 52.91 (4)° and 53.96 (4)° in $[Cd(C_8H_5O_3)_2(C_6H_6N_2O)_2(H_2O)].H_2O$ (Hökelek *et al.*, 2009a), 60.70 (4)° in $[Co(C_9H_{10}NO_2)_2(C_6H_6N_2O)(H_2O)_2]$ (Hökelek *et al.*, 2009b), 58.45 (9)° in $[Mn(C_9H_{10}NO_2)_2(C_6H_6N_2O)(H_2O)_2]$ (Hökelek *et al.*, 2009c), 60.03 (6)° in $[Zn(C_8H_8NO_2)_2(C_6H_6N_2O)_2].H_2O$ (Hökelek *et al.*, 2009d), 58.3 (3)° in $[Zn_2(DENA)_2(C_7H_5O_3)_4].2H_2O$ (Hökelek & Necefoglu, 1996) and 55.2 (1)° in $[Cu(Asp)_2(py)_2]$ (where Asp is acetylsalicylate and py is pyridine) (Greenaway *et al.*, 1984).

The dihedral angles between the planar carboxylate groups and the adjacent benzene rings A (C2—C7) and B (C11—C16) are 11.48 (17) and 12.78 (13)°, respectively, while those between rings A, B, C (N3/C19—C23), D ($Cd1/O1/O2/C1$) and E ($Cd1/O3/O4/C10$) are $A/B = 78.35$ (7), $A/C = 68.85$ (6), $B/C = 75.32$ (6) and $D/E = 61.98$ (5)°.

supplementary materials

In the crystal structure, intermolecular O—H \cdots O, N—H \cdots O and C—H \cdots O hydrogen bonds (Table 2) link the molecules into a three dimensional network, in which they may be effective in the stabilization of the structure. The π – π contact between the pyridine rings, Cg3—Cg3ⁱ [symmetry code: (i) 1 - x, -1 - y, 1 - z, where Cg3 is the centroid of the ring C (N3/C19—C23)] may further stabilize the structure, with centroid-centroid distance of 3.974 (1) Å. There also exist two weak C—H \cdots π interactions (Table 2).

Experimental

The title compound was prepared by the reaction of 3CdSO₄·H₂O (1.28 g, 5 mmol) in H₂O (30 ml) and NA (1.22 g, 10 mmol) in H₂O (20 ml) with sodium 4-(dimethylamino)benzoate (1.88 g, 10 mmol) in H₂O (150 ml). The mixture was filtered and set aside to crystallize at ambient temperature for one week, giving colorless single crystals.

Refinement

Atoms H61 and H62 were located in a difference Fourier map and refined isotropically. The remaining H atoms were positioned geometrically with N—H = 0.86 Å (for NH₂) and C—H = 0.93 and 0.96 Å for aromatic and methyl H atoms, respectively, and constrained to ride on their parent atoms, with $U_{\text{iso}}(\text{H}) = xU_{\text{eq}}(\text{C}, \text{N})$, where $x = 1.5$ for methyl H and $x = 1.2$ for all other H atoms.

Figures

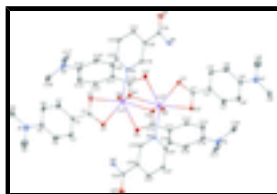


Fig. 1. The molecular structure of the title molecule with the atom-numbering scheme. Displacement ellipsoids are drawn at the 40% probability level [symmetry code: (i) -x, -y, 1 - z]. Hydrogen atoms are omitted for clarity.

Bis[μ -4-(dimethylamino)benzoato]- $\kappa^3\text{O},\text{O}':\text{O};\kappa^3\text{O}:\text{O},\text{O}'$ -bis[aqua[4-(dimethylamino)benzoato- $\kappa^2\text{O},\text{O}'$](nicotinamide- κN^1)cadmium(II)]

Crystal data

[Cd₂(C₉H₁₀NO₂)₄(C₆H₆N₂O)₂(H₂O)₂]

$M_r = 1161.83$

Triclinic, $P\bar{1}$

Hall symbol: -P 1

$a = 9.5453$ (2) Å

$b = 10.2372$ (2) Å

$c = 13.5697$ (3) Å

$\alpha = 74.102$ (3)°

$\beta = 79.479$ (3)°

$\gamma = 66.547$ (2)°

$V = 1165.85$ (5) Å³

$Z = 1$

$F(000) = 592$

$D_x = 1.655$ Mg m⁻³

Mo $K\alpha$ radiation, $\lambda = 0.71073$ Å

Cell parameters from 9880 reflections

$\theta = 2.4$ – 28.5 °

$\mu = 0.99$ mm⁻¹

$T = 100$ K

Block, colorless

$0.36 \times 0.24 \times 0.13$ mm

Data collection

Bruker Kappa APEXII CCD area-detector diffractometer	5862 independent reflections
Radiation source: fine-focus sealed tube graphite	5498 reflections with $I > 2\sigma(I)$
φ and ω scans	$R_{\text{int}} = 0.026$
Absorption correction: multi-scan (SADABS; Bruker, 2005)	$\theta_{\text{max}} = 28.5^\circ$, $\theta_{\text{min}} = 1.6^\circ$
$T_{\text{min}} = 0.752$, $T_{\text{max}} = 0.879$	$h = -12 \rightarrow 12$
21249 measured reflections	$k = -13 \rightarrow 13$
	$l = -18 \rightarrow 18$

Refinement

Refinement on F^2	Primary atom site location: structure-invariant direct methods
Least-squares matrix: full	Secondary atom site location: difference Fourier map
$R[F^2 > 2\sigma(F^2)] = 0.022$	Hydrogen site location: inferred from neighbouring sites
$wR(F^2) = 0.056$	H atoms treated by a mixture of independent and constrained refinement
$S = 1.06$	$w = 1/[\sigma^2(F_o^2) + (0.0271P)^2 + 0.7237P]$
5862 reflections	where $P = (F_o^2 + 2F_c^2)/3$
328 parameters	$(\Delta/\sigma)_{\text{max}} < 0.001$
0 restraints	$\Delta\rho_{\text{max}} = 0.67 \text{ e } \text{\AA}^{-3}$
	$\Delta\rho_{\text{min}} = -0.49 \text{ e } \text{\AA}^{-3}$

Special details

Geometry. All e.s.d.'s (except the e.s.d. in the dihedral angle between two l.s. planes) are estimated using the full covariance matrix. The cell e.s.d.'s are taken into account individually in the estimation of e.s.d.'s in distances, angles and torsion angles; correlations between e.s.d.'s in cell parameters are only used when they are defined by crystal symmetry. An approximate (isotropic) treatment of cell e.s.d.'s is used for estimating e.s.d.'s involving l.s. planes.

Refinement. Refinement of F^2 against ALL reflections. The weighted R -factor wR and goodness of fit S are based on F^2 , conventional R -factors R are based on F , with F set to zero for negative F^2 . The threshold expression of $F^2 > \sigma(F^2)$ is used only for calculating R -factors(gt) *etc.* and is not relevant to the choice of reflections for refinement. R -factors based on F^2 are statistically about twice as large as those based on F , and R -factors based on ALL data will be even larger.

Fractional atomic coordinates and isotropic or equivalent isotropic displacement parameters (\AA^2)

	x	y	z	$U_{\text{iso}}^*/U_{\text{eq}}$
Cd1	0.180220 (12)	0.040917 (12)	0.492667 (9)	0.01404 (4)
O1	0.10108 (14)	0.14484 (13)	0.63748 (9)	0.0207 (2)
O2	0.33823 (14)	-0.01006 (15)	0.62185 (10)	0.0221 (3)
O3	0.02478 (14)	0.30555 (14)	0.40644 (10)	0.0212 (2)
O4	-0.02665 (13)	0.11559 (13)	0.40059 (9)	0.0189 (2)
O5	0.35463 (15)	-0.60232 (14)	0.34334 (13)	0.0320 (3)

supplementary materials

O6	0.34839 (15)	0.12770 (14)	0.37393 (10)	0.0208 (3)
H61	0.438 (3)	0.091 (3)	0.374 (2)	0.039 (7)*
H62	0.331 (3)	0.215 (3)	0.364 (2)	0.042 (7)*
N1	0.2767 (2)	-0.0371 (2)	1.10325 (13)	0.0338 (4)
N2	-0.2931 (2)	0.5498 (2)	-0.01791 (15)	0.0481 (6)
N3	0.32213 (15)	-0.17835 (15)	0.44145 (11)	0.0161 (3)
N4	0.12133 (18)	-0.45388 (19)	0.38859 (17)	0.0367 (5)
H4A	0.0796	-0.5110	0.3814	0.044*
H4B	0.0655	-0.3738	0.4075	0.044*
C1	0.22674 (19)	0.06515 (18)	0.67584 (13)	0.0172 (3)
C2	0.24275 (19)	0.04966 (19)	0.78525 (13)	0.0188 (3)
C3	0.1236 (2)	0.1251 (2)	0.84793 (15)	0.0297 (4)
H3	0.0358	0.1959	0.8188	0.036*
C4	0.1318 (2)	0.0978 (3)	0.95279 (15)	0.0358 (5)
H4	0.0498	0.1506	0.9925	0.043*
C5	0.2614 (2)	-0.0079 (2)	1.00013 (14)	0.0241 (4)
C6	0.3803 (2)	-0.0844 (3)	0.93693 (17)	0.0432 (6)
H6	0.4680	-0.1559	0.9658	0.052*
C7	0.3707 (2)	-0.0565 (3)	0.83278 (17)	0.0414 (6)
H7	0.4520	-0.1101	0.7930	0.050*
C8	0.1518 (3)	0.0277 (3)	1.17494 (18)	0.0522 (7)
H8A	0.1926	0.0409	1.2296	0.078*
H8B	0.0955	-0.0355	1.2029	0.078*
H8C	0.0849	0.1207	1.1397	0.078*
C9	0.4091 (3)	-0.1524 (3)	1.14836 (17)	0.0412 (5)
H9A	0.4063	-0.1499	1.2189	0.062*
H9B	0.5002	-0.1395	1.1114	0.062*
H9C	0.4092	-0.2449	1.1449	0.062*
C10	-0.04015 (17)	0.25041 (18)	0.36627 (13)	0.0164 (3)
C11	-0.12533 (19)	0.33661 (18)	0.27396 (13)	0.0188 (3)
C12	-0.1946 (2)	0.2771 (2)	0.22633 (16)	0.0303 (4)
H12	-0.2022	0.1873	0.2590	0.036*
C13	-0.2528 (3)	0.3473 (3)	0.13181 (18)	0.0400 (5)
H13	-0.2986	0.3040	0.1022	0.048*
C14	-0.2439 (2)	0.4826 (3)	0.07997 (16)	0.0353 (5)
C15	-0.1832 (2)	0.5474 (2)	0.13103 (16)	0.0316 (4)
H15	-0.1824	0.6404	0.1010	0.038*
C16	-0.1245 (2)	0.4756 (2)	0.22524 (14)	0.0231 (4)
H16	-0.0835	0.5207	0.2569	0.028*
C17	-0.2400 (3)	0.6651 (4)	-0.07824 (19)	0.0612 (9)
H17A	-0.2756	0.6970	-0.1457	0.092*
H17B	-0.1300	0.6285	-0.0838	0.092*
H17C	-0.2792	0.7458	-0.0451	0.092*
C18	-0.3162 (4)	0.4603 (4)	-0.0761 (2)	0.0700 (11)
H18A	-0.3484	0.5187	-0.1424	0.105*
H18B	-0.3935	0.4231	-0.0396	0.105*
H18C	-0.2219	0.3802	-0.0846	0.105*
C19	0.25695 (18)	-0.26001 (17)	0.41870 (12)	0.0158 (3)
H19	0.1506	-0.2288	0.4251	0.019*

C20	0.34143 (18)	-0.38911 (17)	0.38596 (13)	0.0160 (3)
C21	0.50027 (19)	-0.43196 (18)	0.37210 (14)	0.0192 (3)
H21	0.5599	-0.5158	0.3479	0.023*
C22	0.56831 (19)	-0.34787 (18)	0.39492 (14)	0.0200 (3)
H22	0.6742	-0.3742	0.3861	0.024*
C23	0.47585 (18)	-0.22380 (18)	0.43116 (13)	0.0183 (3)
H23	0.5221	-0.1699	0.4491	0.022*
C24	0.27089 (19)	-0.48910 (18)	0.37050 (13)	0.0180 (3)

Atomic displacement parameters (\AA^2)

	U^{11}	U^{22}	U^{33}	U^{12}	U^{13}	U^{23}
Cd1	0.00975 (6)	0.01423 (6)	0.01936 (7)	-0.00424 (4)	-0.00041 (4)	-0.00645 (4)
O1	0.0180 (6)	0.0199 (6)	0.0216 (6)	-0.0039 (5)	-0.0013 (5)	-0.0055 (5)
O2	0.0146 (6)	0.0317 (7)	0.0235 (6)	-0.0076 (5)	0.0011 (5)	-0.0147 (5)
O3	0.0175 (6)	0.0234 (6)	0.0251 (6)	-0.0106 (5)	-0.0027 (5)	-0.0038 (5)
O4	0.0146 (5)	0.0156 (5)	0.0242 (6)	-0.0040 (4)	-0.0016 (5)	-0.0032 (5)
O5	0.0226 (7)	0.0207 (6)	0.0575 (10)	-0.0107 (5)	0.0111 (6)	-0.0216 (6)
O6	0.0140 (6)	0.0149 (6)	0.0319 (7)	-0.0055 (5)	0.0024 (5)	-0.0054 (5)
N1	0.0317 (9)	0.0417 (10)	0.0189 (8)	-0.0081 (8)	0.0012 (7)	-0.0031 (7)
N2	0.0338 (10)	0.0590 (14)	0.0280 (10)	0.0090 (9)	-0.0135 (8)	-0.0055 (9)
N3	0.0130 (6)	0.0142 (6)	0.0208 (7)	-0.0052 (5)	0.0000 (5)	-0.0043 (5)
N4	0.0140 (7)	0.0274 (8)	0.0800 (14)	-0.0064 (6)	0.0000 (8)	-0.0343 (9)
C1	0.0168 (7)	0.0183 (7)	0.0206 (8)	-0.0100 (6)	0.0016 (6)	-0.0075 (6)
C2	0.0173 (8)	0.0225 (8)	0.0199 (8)	-0.0098 (7)	0.0013 (6)	-0.0077 (6)
C3	0.0241 (9)	0.0290 (10)	0.0219 (9)	0.0031 (8)	0.0010 (7)	-0.0050 (7)
C4	0.0273 (10)	0.0416 (12)	0.0205 (9)	0.0025 (9)	0.0055 (8)	-0.0067 (8)
C5	0.0227 (9)	0.0290 (9)	0.0204 (8)	-0.0116 (7)	0.0015 (7)	-0.0040 (7)
C6	0.0231 (10)	0.0654 (16)	0.0308 (11)	0.0066 (10)	-0.0103 (8)	-0.0243 (11)
C7	0.0182 (9)	0.0676 (16)	0.0304 (11)	0.0054 (10)	-0.0056 (8)	-0.0284 (11)
C8	0.0413 (14)	0.0785 (19)	0.0211 (10)	-0.0141 (13)	0.0112 (9)	-0.0075 (11)
C9	0.0452 (13)	0.0485 (13)	0.0272 (10)	-0.0092 (11)	-0.0155 (9)	-0.0083 (10)
C10	0.0094 (7)	0.0177 (7)	0.0194 (8)	-0.0030 (6)	0.0010 (6)	-0.0045 (6)
C11	0.0132 (7)	0.0172 (7)	0.0217 (8)	0.0000 (6)	-0.0023 (6)	-0.0054 (6)
C12	0.0327 (10)	0.0223 (9)	0.0367 (11)	-0.0064 (8)	-0.0141 (8)	-0.0060 (8)
C13	0.0404 (12)	0.0380 (12)	0.0417 (12)	-0.0030 (10)	-0.0223 (10)	-0.0141 (10)
C14	0.0227 (9)	0.0399 (11)	0.0263 (10)	0.0078 (8)	-0.0082 (8)	-0.0061 (8)
C15	0.0222 (9)	0.0298 (10)	0.0290 (10)	-0.0014 (8)	-0.0015 (8)	0.0023 (8)
C16	0.0169 (8)	0.0226 (8)	0.0262 (9)	-0.0050 (7)	-0.0004 (7)	-0.0039 (7)
C17	0.0276 (12)	0.083 (2)	0.0278 (12)	0.0100 (12)	-0.0016 (9)	0.0126 (12)
C18	0.0556 (17)	0.085 (2)	0.0421 (15)	0.0227 (16)	-0.0289 (13)	-0.0291 (15)
C19	0.0124 (7)	0.0151 (7)	0.0199 (8)	-0.0058 (6)	0.0002 (6)	-0.0040 (6)
C20	0.0143 (7)	0.0138 (7)	0.0199 (8)	-0.0053 (6)	-0.0002 (6)	-0.0043 (6)
C21	0.0136 (7)	0.0155 (7)	0.0257 (8)	-0.0032 (6)	0.0017 (6)	-0.0058 (6)
C22	0.0106 (7)	0.0176 (8)	0.0293 (9)	-0.0042 (6)	0.0002 (6)	-0.0038 (7)
C23	0.0139 (7)	0.0169 (7)	0.0248 (8)	-0.0072 (6)	-0.0011 (6)	-0.0038 (6)
C24	0.0164 (7)	0.0141 (7)	0.0236 (8)	-0.0057 (6)	-0.0010 (6)	-0.0045 (6)

supplementary materials

Geometric parameters (Å, °)

Cd1—O1	2.3511 (12)	C8—H8A	0.9600
Cd1—O2	2.3362 (12)	C8—H8B	0.9600
Cd1—O3	2.5705 (13)	C8—H8C	0.9600
Cd1—O4 ⁱ	2.5762 (12)	C9—H9A	0.9600
Cd1—O6	2.3170 (12)	C9—H9B	0.9600
Cd1—N3	2.3339 (14)	C9—H9C	0.9600
Cd1—C1	2.6955 (17)	C11—C10	1.485 (2)
O1—C1	1.262 (2)	C11—C12	1.385 (3)
O2—C1	1.278 (2)	C11—C16	1.398 (2)
O3—C10	1.253 (2)	C12—C13	1.381 (3)
O4—Cd1	2.2849 (12)	C12—H12	0.9300
O4—Cd1 ⁱ	2.5762 (12)	C13—C14	1.400 (3)
O4—C10	1.291 (2)	C13—H13	0.9300
O5—C24	1.228 (2)	C14—N2	1.388 (3)
O6—H61	0.78 (3)	C15—C14	1.400 (3)
O6—H62	0.81 (3)	C15—H15	0.9300
N1—C5	1.371 (2)	C16—C15	1.381 (3)
N1—C8	1.452 (3)	C16—H16	0.9300
N1—C9	1.437 (3)	C17—N2	1.455 (4)
N3—C19	1.344 (2)	C17—H17A	0.9600
N3—C23	1.344 (2)	C17—H17B	0.9600
N4—C24	1.319 (2)	C17—H17C	0.9600
N4—H4A	0.8600	C18—N2	1.460 (4)
N4—H4B	0.8600	C18—H18A	0.9600
C1—C2	1.479 (2)	C18—H18B	0.9600
C2—C3	1.386 (2)	C18—H18C	0.9600
C2—C7	1.391 (3)	C19—C20	1.392 (2)
C3—C4	1.384 (3)	C19—H19	0.9300
C3—H3	0.9300	C20—C21	1.392 (2)
C4—H4	0.9300	C20—C24	1.504 (2)
C5—C4	1.399 (3)	C21—C22	1.387 (2)
C5—C6	1.394 (3)	C21—H21	0.9300
C6—C7	1.376 (3)	C22—H22	0.9300
C6—H6	0.9300	C23—C22	1.388 (2)
C7—H7	0.9300	C23—H23	0.9300
O1—Cd1—O3	80.40 (4)	C7—C6—C5	121.4 (2)
O1—Cd1—O4 ⁱ	81.03 (4)	C7—C6—H6	119.3
O1—Cd1—C1	27.90 (5)	C2—C7—H7	119.1
O2—Cd1—O1	55.96 (4)	C6—C7—C2	121.85 (19)
O2—Cd1—O3	121.05 (4)	C6—C7—H7	119.1
O2—Cd1—O4 ⁱ	95.15 (4)	N1—C8—H8A	109.5
O2—Cd1—C1	28.30 (5)	N1—C8—H8B	109.5
O3—Cd1—O4 ⁱ	116.80 (4)	N1—C8—H8C	109.5
O3—Cd1—C1	103.06 (5)	H8A—C8—H8B	109.5
O4—Cd1—O1	108.51 (4)	H8A—C8—H8C	109.5

O4—Cd1—O2	163.91 (4)	H8B—C8—H8C	109.5
O4—Cd1—O3	53.78 (4)	N1—C9—H9A	109.5
O4—Cd1—O4 ⁱ	76.87 (4)	N1—C9—H9B	109.5
O4—Cd1—O6	102.15 (5)	N1—C9—H9C	109.5
O4—Cd1—N3	98.43 (5)	H9A—C9—H9B	109.5
O4—Cd1—C1	135.79 (5)	H9A—C9—H9C	109.5
O4 ⁱ —Cd1—C1	85.18 (4)	H9B—C9—H9C	109.5
O6—Cd1—O1	113.98 (5)	O3—C10—O4	120.68 (15)
O6—Cd1—O2	89.36 (5)	O3—C10—C11	120.28 (15)
O6—Cd1—O3	73.12 (4)	O4—C10—C11	118.91 (15)
O6—Cd1—O4 ⁱ	163.97 (4)	C12—C11—C10	121.50 (16)
O6—Cd1—N3	84.01 (5)	C12—C11—C16	117.17 (17)
O6—Cd1—C1	105.44 (5)	C16—C11—C10	120.97 (16)
N3—Cd1—O1	142.57 (5)	C11—C12—H12	119.0
N3—Cd1—O2	93.88 (5)	C13—C12—C11	121.9 (2)
N3—Cd1—O3	137.02 (4)	C13—C12—H12	119.0
N3—Cd1—O4 ⁱ	80.34 (4)	C12—C13—C14	121.0 (2)
N3—Cd1—C1	118.10 (5)	C12—C13—H13	119.5
C1—O1—Cd1	91.41 (10)	C14—C13—H13	119.5
C1—O2—Cd1	91.67 (10)	N2—C14—C13	121.5 (2)
C10—O3—Cd1	85.54 (10)	N2—C14—C15	121.4 (2)
Cd1—O4—Cd1 ⁱ	103.13 (4)	C13—C14—C15	117.13 (18)
C10—O4—Cd1	97.69 (10)	C14—C15—H15	119.4
C10—O4—Cd1 ⁱ	140.80 (10)	C16—C15—C14	121.2 (2)
Cd1—O6—H61	124 (2)	C16—C15—H15	119.4
Cd1—O6—H62	116.2 (19)	C11—C16—H16	119.3
H61—O6—H62	104 (3)	C15—C16—C11	121.40 (19)
C5—N1—C9	120.90 (18)	C15—C16—H16	119.3
C5—N1—C8	122.36 (19)	N2—C17—H17A	109.5
C9—N1—C8	115.94 (18)	N2—C17—H17B	109.5
C14—N2—C17	117.8 (2)	N2—C17—H17C	109.5
C14—N2—C18	117.6 (2)	H17A—C17—H17B	109.5
C17—N2—C18	115.8 (2)	H17A—C17—H17C	109.5
C19—N3—Cd1	122.92 (10)	H17B—C17—H17C	109.5
C23—N3—Cd1	119.01 (11)	N2—C18—H18A	109.5
C23—N3—C19	118.04 (14)	N2—C18—H18B	109.5
C24—N4—H4A	120.0	N2—C18—H18C	109.5
C24—N4—H4B	120.0	H18A—C18—H18B	109.5
H4A—N4—H4B	120.0	H18A—C18—H18C	109.5
O1—C1—Cd1	60.69 (9)	H18B—C18—H18C	109.5
O1—C1—O2	119.93 (15)	N3—C19—C20	122.96 (14)
O1—C1—C2	120.45 (15)	N3—C19—H19	118.5
O2—C1—Cd1	60.04 (9)	C20—C19—H19	118.5
O2—C1—C2	119.48 (15)	C19—C20—C21	118.29 (15)
C2—C1—Cd1	167.27 (11)	C19—C20—C24	123.42 (14)
C3—C2—C1	121.73 (16)	C21—C20—C24	118.20 (14)
C3—C2—C7	116.93 (17)	C20—C21—H21	120.5
C7—C2—C1	120.76 (16)	C22—C21—C20	119.03 (15)

supplementary materials

C2—C3—H3	119.1	C22—C21—H21	120.5
C4—C3—C2	121.74 (18)	C21—C22—C23	118.92 (15)
C4—C3—H3	119.1	C21—C22—H22	120.5
C3—C4—C5	121.17 (18)	C23—C22—H22	120.5
C3—C4—H4	119.4	N3—C23—C22	122.66 (15)
C5—C4—H4	119.4	N3—C23—H23	118.7
N1—C5—C4	123.52 (18)	C22—C23—H23	118.7
N1—C5—C6	119.59 (18)	O5—C24—N4	122.03 (16)
C6—C5—C4	116.89 (18)	O5—C24—C20	118.99 (15)
C5—C6—H6	119.3	N4—C24—C20	118.97 (15)
O2—Cd1—O1—C1	-5.81 (9)	Cd1 ⁱ —O4—Cd1—C1	-68.68 (7)
O3—Cd1—O1—C1	-144.01 (10)	C10—O4—Cd1—O1	70.86 (10)
O4—Cd1—O1—C1	169.50 (9)	C10—O4—Cd1—O2	85.00 (18)
O4 ⁱ —Cd1—O1—C1	96.68 (10)	C10—O4—Cd1—O3	8.44 (9)
O6—Cd1—O1—C1	-77.44 (10)	C10—O4—Cd1—O4 ⁱ	146.56 (11)
N3—Cd1—O1—C1	35.73 (13)	C10—O4—Cd1—O6	-49.84 (10)
O1—Cd1—O2—C1	5.74 (9)	C10—O4—Cd1—N3	-135.48 (10)
O3—Cd1—O2—C1	55.83 (11)	C10—O4—Cd1—C1	77.88 (11)
O4—Cd1—O2—C1	-10.5 (2)	Cd1—O4—C10—O3	-16.40 (16)
O4 ⁱ —Cd1—O2—C1	-69.80 (10)	Cd1 ⁱ —O4—C10—O3	105.49 (18)
O6—Cd1—O2—C1	125.61 (10)	Cd1—O4—C10—C11	159.57 (12)
N3—Cd1—O2—C1	-150.44 (10)	Cd1 ⁱ —O4—C10—C11	-78.5 (2)
O1—Cd1—O3—C10	-130.16 (10)	C8—N1—C5—C4	7.3 (4)
O2—Cd1—O3—C10	-170.30 (9)	C8—N1—C5—C6	-173.6 (3)
O4—Cd1—O3—C10	-8.64 (9)	C9—N1—C5—C4	176.6 (2)
O4 ⁱ —Cd1—O3—C10	-55.38 (10)	C9—N1—C5—C6	-4.3 (3)
O6—Cd1—O3—C10	111.01 (10)	Cd1—N3—C19—C20	178.53 (12)
N3—Cd1—O3—C10	50.07 (11)	C23—N3—C19—C20	0.5 (2)
C1—Cd1—O3—C10	-146.56 (9)	Cd1—N3—C23—C22	-175.85 (13)
O1—Cd1—N3—C19	104.17 (13)	C19—N3—C23—C22	2.3 (2)
O1—Cd1—N3—C23	-77.81 (14)	Cd1—C1—C2—C3	-93.7 (6)
O2—Cd1—N3—C19	137.60 (13)	Cd1—C1—C2—C7	77.3 (6)
O2—Cd1—N3—C23	-44.39 (13)	O1—C1—C2—C3	-2.3 (3)
O3—Cd1—N3—C19	-76.20 (14)	O1—C1—C2—C7	168.71 (19)
O3—Cd1—N3—C23	101.82 (13)	O2—C1—C2—C3	-177.86 (17)
O4—Cd1—N3—C19	-32.01 (13)	O2—C1—C2—C7	-6.9 (3)
O4 ⁱ —Cd1—N3—C19	43.03 (12)	C1—C2—C3—C4	172.1 (2)
O4—Cd1—N3—C23	146.00 (12)	C7—C2—C3—C4	0.8 (3)
O4 ⁱ —Cd1—N3—C23	-138.96 (13)	C1—C2—C7—C6	-172.4 (2)
O6—Cd1—N3—C19	-133.45 (13)	C3—C2—C7—C6	-1.0 (4)
O6—Cd1—N3—C23	44.56 (12)	C2—C3—C4—C5	-0.1 (4)
C1—Cd1—N3—C19	122.22 (12)	N1—C5—C4—C3	178.6 (2)
C1—Cd1—N3—C23	-59.76 (13)	C6—C5—C4—C3	-0.5 (4)
O1—Cd1—C1—O2	-169.81 (16)	N1—C5—C6—C7	-178.8 (3)
O1—Cd1—C1—C2	98.7 (5)	C4—C5—C6—C7	0.4 (4)
O2—Cd1—C1—O1	169.81 (16)	C5—C6—C7—C2	0.4 (4)
O2—Cd1—C1—C2	-91.5 (5)	C12—C11—C10—O3	178.21 (17)

O3—Cd1—C1—O1	36.50 (10)	C12—C11—C10—O4	2.2 (2)
O3—Cd1—C1—O2	-133.31 (10)	C16—C11—C10—O3	5.3 (2)
O3—Cd1—C1—C2	135.2 (5)	C16—C11—C10—O4	-170.72 (15)
O4—Cd1—C1—O1	-14.35 (13)	C10—C11—C12—C13	-169.52 (19)
O4 ⁱ —Cd1—C1—O1	-79.92 (9)	C16—C11—C12—C13	3.7 (3)
O4—Cd1—C1—O2	175.84 (9)	C10—C11—C16—C15	170.03 (16)
O4 ⁱ —Cd1—C1—O2	110.28 (10)	C12—C11—C16—C15	-3.2 (3)
O4—Cd1—C1—C2	84.4 (5)	C11—C12—C13—C14	0.0 (3)
O4 ⁱ —Cd1—C1—C2	18.8 (5)	C12—C13—C14—N2	175.8 (2)
O6—Cd1—C1—O1	112.31 (10)	C12—C13—C14—C15	-4.1 (3)
O6—Cd1—C1—O2	-57.50 (10)	C13—C14—N2—C17	-162.1 (2)
O6—Cd1—C1—C2	-149.0 (5)	C13—C14—N2—C18	-15.8 (3)
N3—Cd1—C1—O1	-156.28 (9)	C15—C14—N2—C17	17.8 (3)
N3—Cd1—C1—O2	33.92 (11)	C15—C14—N2—C18	164.1 (2)
N3—Cd1—C1—C2	-57.5 (5)	C16—C15—C14—N2	-175.34 (19)
Cd1—O1—C1—O2	10.19 (16)	C16—C15—C14—C13	4.6 (3)
Cd1—O1—C1—C2	-165.37 (13)	C11—C16—C15—C14	-1.0 (3)
Cd1—O2—C1—O1	-10.26 (16)	N3—C19—C20—C21	-2.8 (2)
Cd1—O2—C1—C2	165.34 (13)	N3—C19—C20—C24	173.63 (15)
Cd1—O3—C10—O4	14.44 (14)	C19—C20—C21—C22	2.3 (2)
Cd1—O3—C10—C11	-161.46 (14)	C24—C20—C21—C22	-174.27 (16)
Cd1 ⁱ —O4—Cd1—O1	-75.71 (5)	C19—C20—C24—O5	-178.59 (17)
Cd1 ⁱ —O4—Cd1—O2	-61.56 (17)	C19—C20—C24—N4	0.0 (3)
Cd1 ⁱ —O4—Cd1—O3	-138.13 (6)	C21—C20—C24—O5	-2.2 (3)
Cd1 ⁱ —O4—Cd1—O4 ⁱ	0.0	C21—C20—C24—N4	176.46 (18)
Cd1 ⁱ —O4—Cd1—O6	163.60 (4)	C20—C21—C22—C23	0.2 (3)
Cd1 ⁱ —O4—Cd1—N3	77.95 (5)	N3—C23—C22—C21	-2.6 (3)

Symmetry codes: (i) $-x, -y, -z+1$.

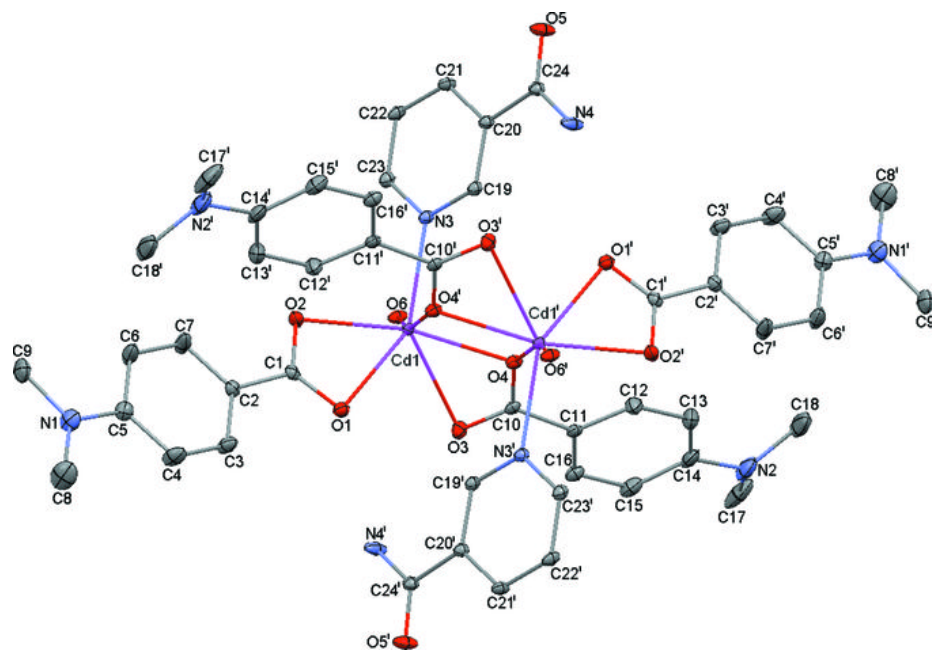
Hydrogen-bond geometry ($\text{\AA}, ^\circ$)

Cg2 and Cg3 are the centroids of the C11–C16 and N3/C19–C23 rings, respectively.

$D-H\cdots A$	$D-H$	$H\cdots A$	$D\cdots A$	$D-H\cdots A$
N4—H4A \cdots O3 ⁱⁱ	0.86	2.07	2.893 (2)	160
N4—H4B \cdots O1 ⁱ	0.86	2.24	2.993 (2)	147
O6—H61 \cdots O2 ⁱⁱⁱ	0.79 (3)	1.97 (3)	2.749 (2)	176 (2)
O6—H62 \cdots O5 ^{iv}	0.82 (3)	1.91 (3)	2.703 (2)	163 (3)
C19—H19 \cdots O1 ⁱ	0.93	2.44	3.302 (2)	155
C23—H23 \cdots O2 ⁱⁱⁱ	0.93	2.57	3.372 (2)	144
C9—H9A \cdots Cg3 ^v	0.96	2.61	3.434 (2)	144
C17—H17B \cdots Cg2 ^{vi}	0.96	2.98	3.887 (3)	159

Symmetry codes: (ii) $x, y-1, z$; (i) $-x, -y, -z+1$; (iii) $-x+1, -y, -z+1$; (iv) $x, y+1, z$; (v) $x, y, z+1$; (vi) $-x, -y+1, -z$.

Fig. 1



Copyright of Acta Crystallographica: Section E (International Union of Crystallography - IUCr) is the property of International Union of Crystallography - IUCr and its content may not be copied or emailed to multiple sites or posted to a listserv without the copyright holder's express written permission. However, users may print, download, or email articles for individual use.