

NOTES ON FAÇADE ARCHITECTURE AND ORNAMENTAL ELEMENTS ON MONUMENTAL ROCK - CUT TOMBS IN HIGHLAND OF PHRYGIA IN HELLENISTIC AND ROMAN IMPERIAL PERIODS

DAĞLIK PHRYGIA'DA HELLENİSTİK VE ROMA İMPARATORLUK DÖNEMİ ANITSAL KAYA MEZARLARINDAKİ CEPHE MİMARİSİ VE MİMARİ SÜSLEME ÖĞELERİ ÜZERİNE NOTLAR

R. Eser KORTANOĞLU *

Makale Bilgisi

Başvuru: 24 Nisan 2015

Hakem Değerlendirmesi: 1 Haziran 2015

Kabul: 5 Şubat 2016

Article Info

Received: April 24, 2015

Peer Review: Jun 1, 2015

Accepted: February 5, 2016

Keywords: Hellenistic and Roman Imperial Periods, Phrygia, Rock-cut Tombs, Monumentality, Façade Architecture.

Anahtar Kelimeler: Hellenistik ve Roma İmparatorluk Dönemleri, Phrygia, Kaya Mezarları, Anıtsallık, Cephe Mimarisi.

in memory of Prof. Dr. Taciser Sivas

ABSTRACT

In the Ancient Anatolia "mountainous section" of Phrygia Region is the section between Dorylaion (today the province of Eskisehir), Kotiaion (today the province of Kütahya) and Akroinos (today the province of Afyon) and it was named "Highlands of Phrygia". In addition to magnificent monuments related to Mother Goddess worship carved in rock in "Phrygian" period as well as monumental tombs of the same period, various types of tombs and chamber tombs carved in rock in Hellenistic and Roman Imperial Periods can be found in Highlands of Phrygia Region. In almost half of the rock-cut chamber tombs carved in rock in Mountainous Phrygia Region in Hellenistic and Roman Imperial Periods façade architecture and ornaments at various levels could be detected. Some of the chamber tombs having such façade architecture are monumental in nature and they are required to be assessed not only in terms of tomb typology but also in terms of "façade design" separately due to ornaments and certain other elements in their facades. For this reason, approximately 20 of the rock-cut chamber tombs with the monumental façade architecture in

* Assoc. Prof. Dr., Anadolu University, Faculty of Humanities, Department of Classical Archaeology, Eskişehir/Turkey
E-mail: rekortan@anadolu.edu.tr

question which I consider to be significant examples have been examined in the article for different aspects. These are Kümbet-Deliklikaya, Kümbet – Solon’s tomb, Zehran, Gerdekkaya which is the most monumental rock-cut tombs with temple form in the region, Kırkgözkaya located in Sacred Phrygian Yazılıkaya, Church, chamber tombs in Yapıldak necropolis within the boundaries of the province of Eskişehir, chamber tombs in Ahlatçınler necropolis, rock-cut chamber tombs in Ayazin town, in Güllük location, from the necropolis nearby village Demirli within the boundaries of the province of Afyon. Two significant elements of comparison have been taken into consideration while dating the rock-cut chamber tombs in Highlands of Phrygia Region: tomb typology and façade architecture/ornaments. Tomb typology is an issue quite separate from the main content of the article and consequently it was not discussed in detail in this study. For façade design, in addition to the ordinary comparisons to be made with structures or carvings in different Ancient regions and geographical regions, the comparisons made for rock carvings in Phrygia Region and Highlands of Phrygia Region with “false door steles” mostly used as “türsteine” or “doorstone” in the literature, reflections of them in the rock carvings in the region as well as Dokimeion type tombs which is one of the most significant tomb production centers of the ancient geography and located in splitting distance to Highlands of Phrygia are remarkable. Furthermore, description of the goddess in her own holy region on the rock in all most all periods is another special example for the concepts of “tradition” and “continuity”.

ÖZET

Antik Dönem Anadolu’sunda, Phrygia Bölgesinin “dağlık kesimi” Dorylaion (günümüzde Eskişehir ili), Kotiaion (günümüzde Kütahya ili) ve Akroinos (günümüzde Afyon ili) arasında kalan kısmıdır ve “Dağlık Phrygia” olarak adlandırılmıştır. Dağlık Phrygia Bölgesinde “Phryg” Döneminde kayaya oyulmuş Ana Tanrıça tapınımı ile ilgili görkemli anıtlar ve aynı döneme ait anıtsal oda mezarların yanı sıra Hellenistik ve Roma İmparatorluk Dönemlerinde kayaya oyulmuş çeşitli tipte mezarlar ve oda mezarlar da bulunmaktadır. Hellenistik ve Roma İmparatorluk Dönemlerinde Dağlık Phrygia Bölgesi’nde, kayaya oyulmuş oda mezarların yarıya yakın kısmında çeşitli seviyelerde cephe mimarisi ve süslemeleri tespit edilebilmiştir. Bu cephe mimarisine sahip oda mezarlardan bazıları anıtsal nitelik gösterirler ve cephelerinde barındırdıkları süsleme ve diğer bazı unsurlardan dolayı sadece mezar tipolojisi yönünden değil “cephe düzenlemesi” açısından da ayrıca değerlendirilmeleri gerekir. Bu nedenle söz konusu anıtsal cephe mimarisine sahip oda mezarlardan, önemli örnekler olduklarını düşündüğüm 20 kadar farklı açılarından makalede irdelenmeye çalışılmıştır. Bunlar Eskişehir ili sınırları içerisinde Kümbet-Deliklikaya, Kümbet – Solon’un Mezarı, Zehran, bölgenin tapınak formu en anıtsal kaya mezarı olan Gerdekkaya, kutsal Phryg Yazılıkayasında bulunan Kırkgözkaya, Kilise, Yapıldak nekropolisindeki oda mezarlar, Afyon ili sınırları içerisinde ise Ahlatçınler nekropolisindeki oda mezarlar, Ayazin kasabasındaki oda mezarlar, Güllük mevkiindeki bir oda mezar, Demirli köyü civarındaki nekropolisten bir oda mezar’dır. Dağlık Phrygia Bölgesi’ndeki oda mezarlar tarihlendirilirken iki önemli karşılaştırma ögesi dikkate alınmıştır. Mezar tipolojisi ve cephe mimarisi/süslemeleri. Mezar tipolojisi makalenin ana içeriğinden ayrı bir konudur ve dolayısıyla burada üzerinde durulmamıştır. Cephe düzenlemesi için ise farklı Antik bölge ve coğrafyalardaki yapılar veya uygulamalar ile yapılması gereken olağan karşılaştırmaların yanı sıra, Phrygia Bölgesi ve Dağlık Phrygia Bölgesi kaya uygulamaları için, literatürde “türsteine” veya “doorstone” şekliyle daha çok kullanılan “sahte kapı stelleri”, bunların bölgede kaya uygulamalarındaki yansımaları ve tüm Antik coğrafyanın en önemli lahit üretim merkezlerinden olan ve Dağlık Phrygia’ya çok yakın bir konumda bulunan Dokimeion tipi lahitler ile yapılan karşılaştırmalar dikkate değer bir nitelik taşımaktadır. Ayrıca kendi kutsal bölgesinde tanrıçanın hemen her dönemde kaya üzerinde betimlenmesi de “gelenek” ve “süreklilik” kavramları için bir diğer özel örnektir.

INTRODUCTION

In Antique period Anatolia, “Highlands” of Phrygia in present day is the area between cities Eskişehir (Dorylaion), Kütahya (Kotiaion) and Afyon (Akroinos) with an appropriate description named as “Highlands of Phrygia” by Haspels.¹ In Highlands of Phrygia –beyond doubt known very well- in “Phrygian” period besides splendid rock-cut monuments related with Goddess worship and monumental chamber tombs belonging to the same period² there are various types of tombs and chamber tombs rock-cutted in Hellenistic and Roman Imperial periods.³ From Hellenistic and Roman Imperial periods, among 122 rock-cut chamber tomb determined in Highlands of Phrygia (118 of them with single room, 4 of them with two rooms) various levels of façade architecture were determined in 77 of them.⁴ Some of these chamber tombs with façade architecture shows monumental quality and because of some elements they should be evaluated due to not only tomb typology but also due to façade architecture. For this reason about 20 of these mentioned chamber tombs with monumental façade architecture were examined below. Tombs were stated majorly chronologically within text. However if a chamber tomb dated to Roman Imperial period is relevant to “Phryg” period due to arrangement, façade, inner floor or with any other feature is presented prior. Other than this if chamber tombs located in the same necropolis and dated to the same period they are stated in sequence. If a chamber tomb’s façade is specially differs from other monumental chamber tomb’s façade in the same necropolis such chamber tomb mentioned in the text later.

Last three chamber tombs are in this state and are described in the end of text. Due to subject of this article other than some necessary details, chamber tomb’s tomb types, inner floors or other features are not mentioned.

Kümbet-Deliklikaya 1 (Figs. 1-2):

Chamber tomb is located in Eskişehir city, Seyitgazi district, on a seperate rock cliff 750-850 m. north of Kümbet village toward south. On the façade of the chamber tomb, there is triangular pediment with relief adornment and pilasters on sides of the door space.⁵

¹ Haspels 1971: V.I, 2, 20, V.II, Pl. 493.

² Sivas 2007a: 15-28; Sivas 2007b: 77-92.

³ Haspels 1971; Sivas 1999; Sivas 2008: 58-79; Sivas 2010: 16-53; Sivas 2012: 112-159; Kortanoğlu 2008; Kortanoğlu 2011a; Kortanoğlu 2011b. Please see for research history: Sivas 1999; Sivas 2007b: 77-92; Kelp 2015.

⁴ Kortanoğlu 2008: 69.

⁵ Haspels 1971: V.I, 178-179, V.II, Fig. 313, Pl. 531/3-4-5; Kortanoğlu 2008: 73, 102, 124, 444-445, pl. 65-66.



Figure 1: Kümbet-Deliklikaya 1 / Kortanoğlu 2008: Pl. 65/2, 66/2

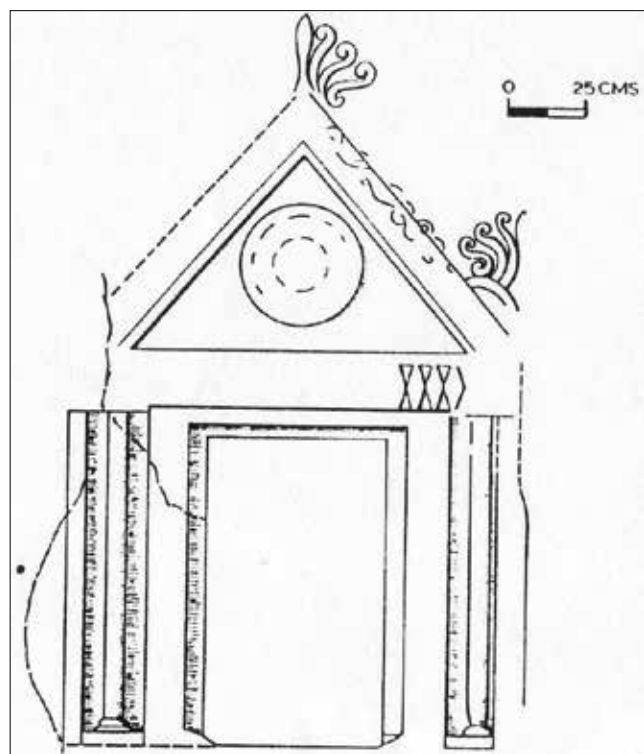


Figure 2: Kümbet-Deliklikaya 1 / Haspels 1971: V.2, Pl. 531/3

On triangular pediment there are acroterion reliefs with palmet ornaments. As can be understood by Haspel's drawings east half of center acroterion and east corner acroterion's west half were preserved. In the outer counters of the triangular pediment sides are 85 cm., the base is 120 cm. long. In the surface limited by inner counters (tympanon) there is a 34 cm diameter circle shaped (shield?) relief. In the eastern side between parts of pediment and door space and pilaster there is a relief in form of three sand clocks (triangles with intersecting edges). It can be said that in original arrangement the mentioned relief continued along entire line. On the both sides of the door space there are two pilaster reliefs. Pilasters have capital and base elements. However capitals were not mentioned in Haspels' drawings.

Haspels dates chamber tombs first carving to "Phryg" period, she states the façade architecture dated to Roman Imperial period

Zehran (Figs. 3-5):

This chamber tomb located in Eskişehir city, Kırka district, 5 km northeast of Göcenoluk village, headed to west, is a copy of "Phryg" monument's façade arrangement.⁶ Tombs entrance is 5.2 m above ground level. Pediment is about 310 cm wide and 120 cm height. Today one can reach the chamber tomb with a ladder. Façade of the chamber tomb with a triangular pediment is divided into two with a linear, rectangular and straight relief. On each sides of this relief there are smooth square carvings. Carving, is turned to a form closed to a sand clock with paint. Triangles on horizontal line are painted in red. It can be traced that inner counters of the pediment was painted with the same red color. There are reliefs and carvings showing double line of geometrical forms between pediment and door space (total 20 triangles). There are two rectangular carving on top of each other on the south of the façade (south) in the finishing point of reliefs. Haspels says that "top and bottom parts represents sand clocks" also for the triangles (figs. 1-2) traced on the façade of the Kümbet-Deliklikaya 1. Definition for "sand clock", she must have used to describe geometric forms, inverted triangles.

Haspels, considering chamber's old Greek architectural effect on façade and in inner floor and chamber's "post Phryg" characteristics, evaluated the chamber within Hellenistic period. Zehran, is one of the four rock cut chamber tomb dated to Hellenistic period in Highlands of Phrygia with Gerdekkaya, Kilise and Yazılıkaya-Kırkgözkaya.

⁶ Haspels 1971: V.I, 161-162, V.II, Figs. 247-249, Pls. 550, 551/1-2; Kortanoğlu 2008: 57, 59, 70, 73-74, 104, 126, 446-447, Pls. 66-69.



Figure 3: Zehran (Kortanoğlu 2008: Pl. 68/2)



Figure 4: Zehran (Kortanoğlu 2008: Pl. 68/1)

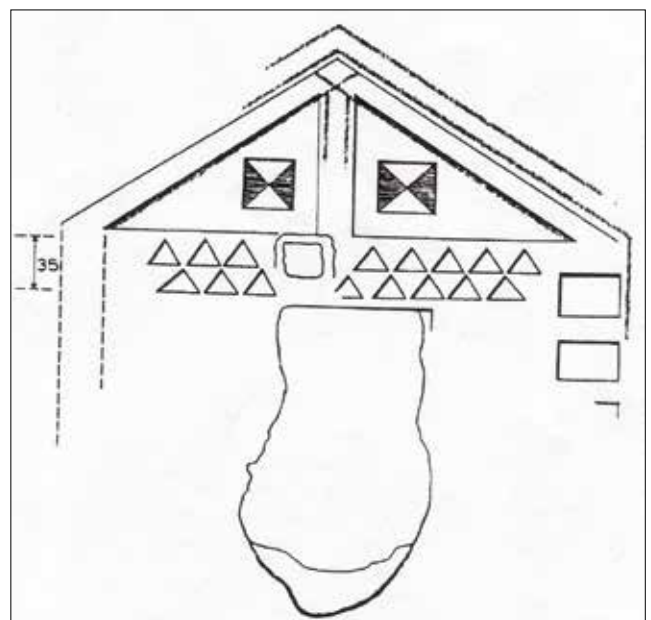


Figure 5: Zehran (Haspels 1971: V.2, Pl. 550/4)

Kümbet – Tomb of Solon (Figs. 6-12):

It is in Eskişehir city, Seyitgazi district, on the hill peak in Kümbet village's center, chamber tomb located through east and because of the inscription on it dedicated, it named as "Tomb of Solon", have a detailed engraved triangular pediment, inside there are two chambers connected with a

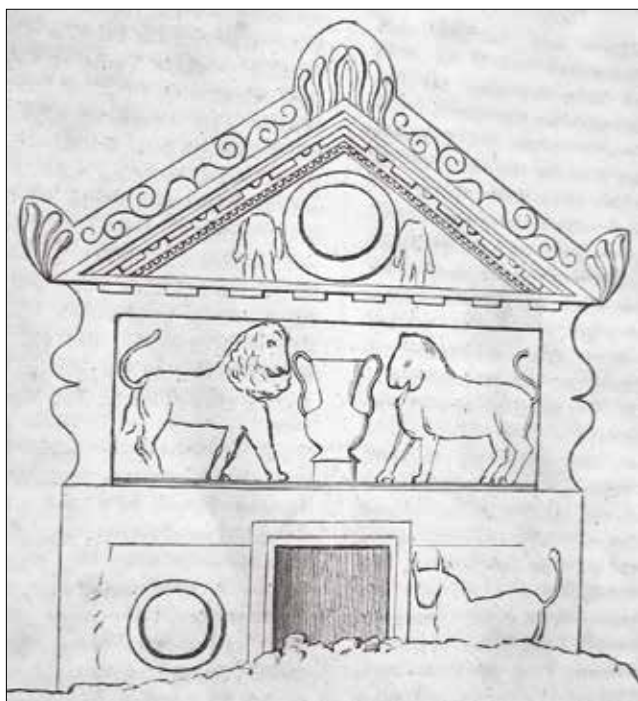


Figure 6: Kümbet – Tomb of Solon (Barth 1860: 96)

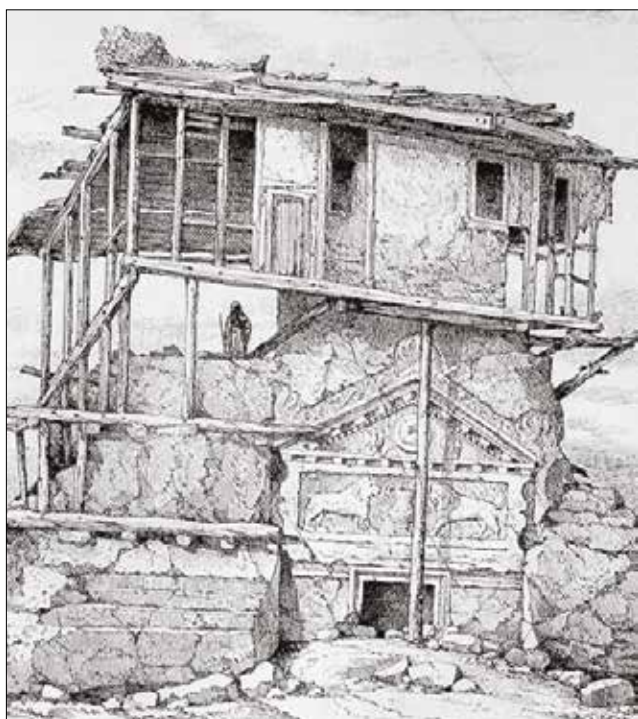


Figure 7: Kümbet – Tomb of Solon / *Kümbet – Solon'un Mezarı* (Perrot-Chipiez 1890: 129)

dromos.⁷ Solon's tomb is also one of the chamber tombs cut into four rocks with two chambers in Highlands of Phrygia (others are Gerdekkaya, Kilise and Yazılıkaya-Kırkgözkaya). On the other hand this three tombs show side by side chamber plan type. Solon's tomb shows a chamber plan type one after another and with this aspect it is the single example for Roman Imperial period in Highlands of Phrygia. As Laborde also mentioned the chamber tomb should have been located in acropolis of the settlement. Chamber tomb is a monumental and a magnificent carving.

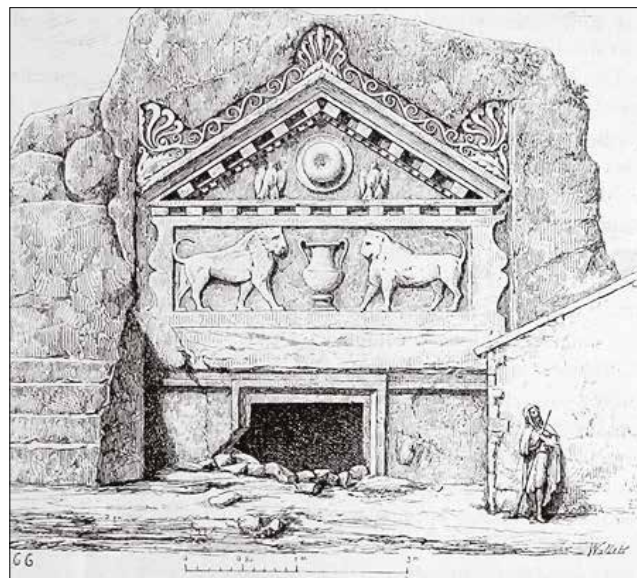


Figure 8: Kümbet – Tomb of Solon / *Kümbet – Solon'un Mezarı*. (Perrot-Chipiez 1890: 132)

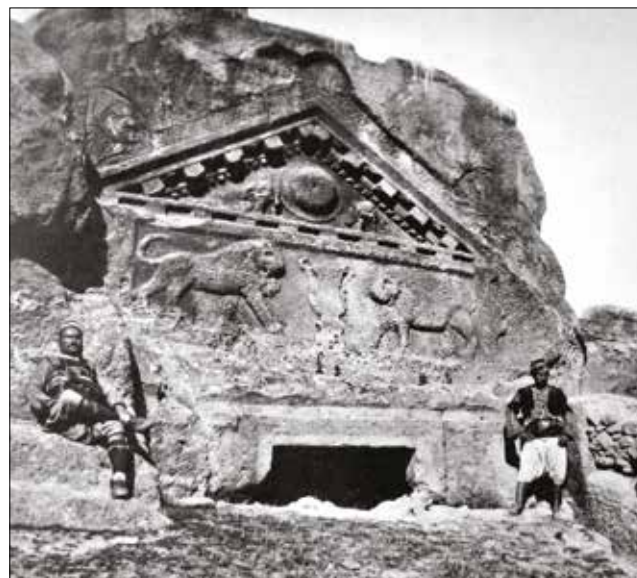


Figure 9: Kümbet – Tomb of Solon / *Kümbet – Solon'un Mezarı* (Reber 1897: *Levha X*)

⁷ Laborde 1838: 78; Barth 1860: 96; Texier 2002 (1862): V.II, 359; Ramsay 1889: 185; Perrot 1890: 128, 131-135; Reber 1897: 61-62; Koerte 1898: 147; Akurgal 1961: 117, Fig. 76; Haspels 1971: V.I, 178, 307-308, V.II, Pl. 543, Fig. 96; Akurgal 1987: 195, Pl. 74 b; Kortanoğlu 2008: 59-60, 80, 88, 100, 118, 123-124, 573-576, Pl. 195-203; Kortanoğlu 2015: 10-11.

Monumental stairs starting from ground level up to frieze line forming borders of the tomb is extremely original arrangement. There are eight on south side, seven on north side. Width of the stairs narrows going up, height measures increases. Pediment carving is 78 cm behind (to west)



Figure 10: Kümbet – Tomb of Solon / *Kümbet – Solon'un Mezarı* (Kortanoğlu 2008: Levha 195/1)



Figure 11: Kümbet – Tomb of Solon / *Kümbet – Solon'un Mezarı* (Kortanoğlu 2008: Levha 195/2)

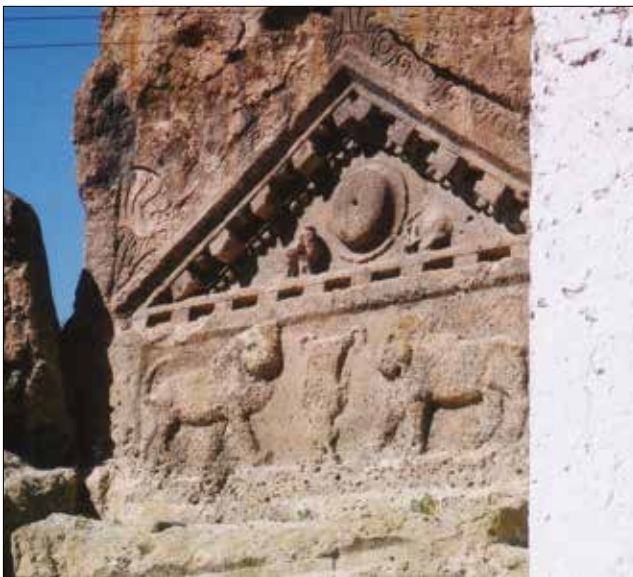


Figure 12: Kümbet – Tomb of Solon / *Kümbet – Solon'un Mezarı* (Kortanoğlu 2008: Levha 201/2)

lento line. Mentioned 78 cm wide corridor is at the point where stairs end. From there façade arrangement is 500 cm. wide and 380 cm height including center acroterion. On center and corner acroterions there are palmet reliefs as on Kümbet-Deliklikaya 1 and spiral motif ornament connects the acroterions. According to Reber handcraft of the acroterions reliefs are quite bad. On the pediment there are dentil friezes on three sides. There are 16 dentil reliefs carved on each sides, eight on short sides and eight on long side. Between dentil friezes on short sides there are human head reliefs (totally eight of them). There is a thinner dentil frieze in the inner part 16 on each short side with total of 32. On the tympanon there are two eagles and a shield in between in a form of high relief. Laborde says that these elements makes one to think the tomb belongs to a local warrior. Also according to him village's landowner with his house on this tomb frightens the villagers this way. Of course we can't be sure that without epigraphical evidence. Below the pediment, within a frieze block like tabula ansata there a low relief with two lions seems like they are moving toward each other between them there is a krater. While Texier states that the lion reliefs recollect the lions above Mykenai's entrance door, Reber says that the lions are fighting. In the entrance part lento is formed from two concentric frames. On both sides of the door space, there are low relief figures which are thought to be cattle animals on smoothed rock surface. However it is hard to make a certain judgment for the relief on north, relief on south confirmed this point of view. Haspels says that the tombs in chamber at the back are "Phrygian" period tombs and coach graves carved later and took their present-day shape. Plan of the chamber behind shows similarities with plan of Kümbet-Deliklikaya 1. It is possible that coaches in Deliklikaya changed into khamosorions in this tomb. Also Perrot states that there are three sarcophagus in the chamber behind. Chamber tomb is dated between II.-IV. centuries AD. Also Haspels states that as in Deliklikaya 1 the chamber tomb behind is "Phryg" originated but re-arranged in Roman Imperial period.

Gerdekkaya (Figs. 13-18):

Monumental tomb which is headed to east, is located in Eskişehir city, Seyitgazi district, on rocky area 500 m southwest of Çukurca village, it is on east side of a large rock carved with doric style to give a temple image above 2.5 m from ground level.⁸

⁸ Texier 2002 (1862): V.II, 352-355, Pl. 60-61; Perrot-Chipiez 1890: 138; Radet 1895: 453; Reber 1897: 60-61, Pl. 11; Koerte 1898: 147; Akurgal 1961: 117, Fig. 75; Gabriel 1965: V.I, 81-82, V.II, Pl. 40-41; Haspels 1971: V.I, 155-157, 191-192, V.II, Pl. 547, 551, 563, Fig. 85-88, 332, 338; Akurgal 1987: 195, Pl. 74 a; Belke-Mersich 1990: 257-258; Fedak 1990: 100, 346, Fig. 124; Özçatal 1993: 419-439; Berndt 2002: 65-66, Fig. 114; Kortanoğlu 2008: 59-60, 70, 81-84, 87, 96-97, 123, 126, 577-582, Pl. 204-212; Kortanoğlu 2015: 10-11.

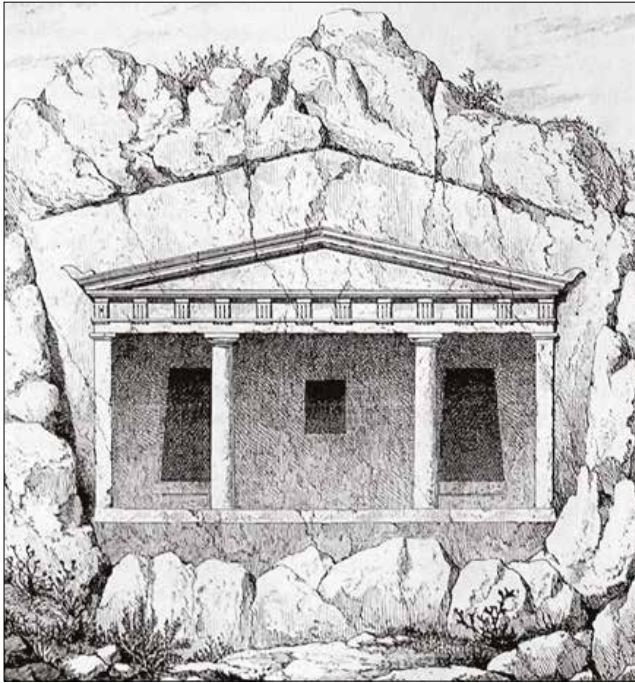


Figure 13: Gerdekkaya (Texier 2002: V.2, Pl. 60)



Figure 14: Gerdekkaya (Kortanoğlu 2008: Pl. 204/1)

Doric order especially in Hellenistic period used in rock-cut tombs and on façades' of tomb monuments both in Anatolia and outside Anatolia, it is under major influence of Macedonian chamber tomb façades and tomb typologies. Gerdekkaya which Texier describes as “it carries great character of Greek art” and Radet as “ it is in an appearance of a temple in doric order” is the most magnificent rock-cut tomb order in Highland of Phrygia. Antae having capitals as bearer element have two plain columns in between which are placed with 275 cm space. Reber says that the columns were stolen within last five years. Since publishing date of his work was 1897, he must be mentioning to dates between 1890-1892. Perror by saying Gerdekkaya was made in “roman-doric” order, on the other hand Reber by saying it was made in “etruscan-doric” order make comparison with Latium Cori temple in “roman-doric” order dated

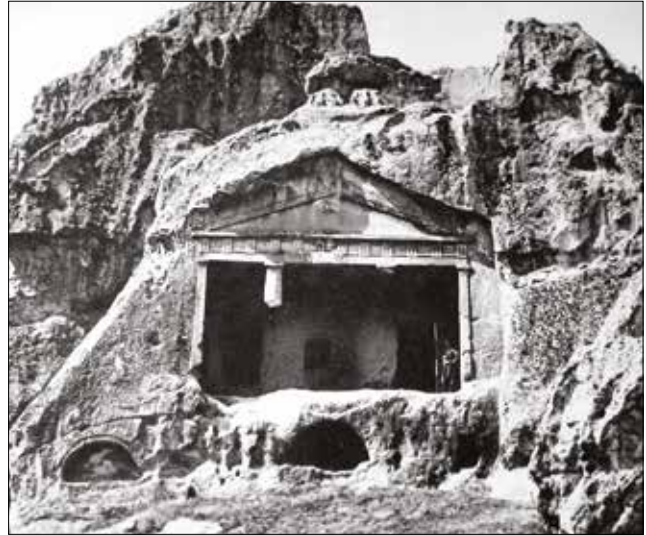


Figure 15: Gerdekkaya (Reber 1897: Pl. IX)



Figure 16: Gerdekkaya (Kortanoğlu 2008: Pl. 205/2)

to 1st century BC. Reber states that column order is in “aräostil” column order in “roman-doric” architectural order. It is 188 cm between south column and south anta, 175 cm. between column in north of the tomb and north anta. On echinus (with height 17 cm) and abacus (with height 10 cm.) architrave takes place. Above architrave there is triglyph-metope frieze. There is no reliefs on metopes. There are 12 triglyph and 11 metope friezes. On bottom part of taenia 12 regula-guttae frieze was arranged. In each regula there are six guttae. Columns are situated on forth triglyphaxis from both sides. Antae are situated on the axis of the first triglyph reliefs from both sides. On pediment surface there is no ornament on geison and sima also on tympanon. On the below part of the geison nor mutulus neither mutulus-guttae frieze was carved. According to Reber this situation shows that it is getting closer to Rome-Italy architecture. Geison has a 20 cm. projecting part. Texier, determines red paint traces on entablature. However the mentioned paint does not exist



Figure 17: Gerdekkaya (Kortanoğlu 2008: Pl. 205/1)



Figure 18: Gerdekkaya (Kortanoğlu 2008: Pl. 209/2)

today. Center acroterion designed as a half circle and a palmet like ornament, right acroterion arranged as a palmet form. Left acroterion is not preserved. Ceiling placed with right angle to the tomb duplicating a wooden support system was divided into six full and two half totally into eight parts. On the ceiling formed this way in seven parts there are square formed ceiling coffers within frames. In each part there are five ceiling coffers. About the possibility between Gerdekkaya monumental tomb and Macedonian migration to this area during Hellenistic period, in same necropolis on a tomb with arcosolium painted ornament in form of a Macedonian shield coat of arms (?) attracts attention.⁹ According to Texier Gerdekkaya must be dated after “Phryg” period and must be carved during Persian dominance in the area. Steuart said Gerdekkaya must be dated much later periods than Phryg rock monuments¹⁰. Gerdekkaya, was carved in Hellenistic period and later rearranged and used in Roman Imperial period.

⁹ Kortanoğlu 2008 b.

¹⁰ See in Haspels V.I, 156 for Steuart Pl. 12

Yazılıkaya/Kırkgözkaya (Figs. 19-21):

In Eskişehir city, 28 km south of Seyitgazi district there lays Yazılıkaya village and “Phryg” period Yazılıkaya sacred area.¹¹ Kırkgözkaya is located in north of Mother Goddess sacred area and 32.4 m north of the famous and spectacular monument in the area. This is a small hill totally carved from rock (red rock sand) and on it there are rock carved spaces. On the east slope of Kırkgözkaya there is a monumental tomb headed towards east.¹² Although in present-day the façade of the chamber tomb in Yazılıkaya-Kırkgözkaya has been destroyed, Leake stated that there has been a portico with two columns, as in Eskişehir/Gerdekkaya two columns with capital elements appears to be carrying hall ceiling and columns carrying a geison with dentil frieze ornaments. Ramsay states that these columns were not in doric order as in Gerdekkaya, but in a local architectural order with “Phryg” influence, not Greek originated. As in Gerdekkaya ceiling system of the entrance hall is formed from reliefs of imitation



Figure 19: Yazılıkaya/Kırkgözkaya (Kortanoğlu 2008: Pl. 219/1)



Figure 20: Yazılıkaya/Kırkgözkaya (Kortanoğlu 2008: Pl. 219/2)

¹¹ Sivas 2007 a: 15-28; Sivas 2007 b: 77-92.

¹² Leake 1824 (1976); Ramsay 1889: 175; Koerte 1898: 82; Haspels 1971: V.I, 157-158; Belke-Mersich 1990: 416; Kortanoğlu 2008: 54, 59-60, 70, 98, 105, 123, 584-588, Pls. 219-224.



Figure 21: Yazılıkaya/Kırkgözkaya. Kortanoğlu 2008: pl. 221/3.

wooden support system reliefs. Very little part of seven imitation ceiling support system (38 cm width, 20 cm. depth) was preserved. In these carvings (observation in year 2005) 12 ceiling coffers within rectangular frames on top of each other were preserved (there were 13 of them in 2002). Coffers were 40 cm width. First frame four cm, second frame 14 cm wider.

Monumental tomb, like in Gerdekkaya example which is very near and can be seen with naked eye was carved in Hellenistic period, rearranged and used in Roman Imperial period and also later.

Kilise - Church (Figs. 22-24):

On northwest slope of the hill in 2 km south of Yenisofça village, in center district, Eskişehir city, it is made from a complex entrance hall towards northwest and two tomb chambers.¹³ Entrance hall is quite a lot high from level ground. There is a triangular pediment above entrance hall. Pediment is 410 cm wide and 65 cm height. Although it is thought that there was a lion relief on right side of the triangular pediment, the relief was destroyed. Koerte thinks the pediment was supported by a quadrangle taking a cavity on section of the pediment bottom as foundation. This façade and pediment arrangement, is an important reason he makes comparison between the tomb and Paphlagonia rock-cut tomb chambers. Brandenburg describes the chamber tomb as “Paphlagonic”. On entrance hall there are two chamber entrances. Entrance of the left chamber was formed with two rectangular frames on top of each other. On both sides of the door spaces pilasters with capitals raised along wall surface. On right and left sides of the entrance hall there is a pilaster and a blind window. One each between door spaces and side



Figure 22: Kilise (Church). Kortanoğlu 2008: pl. 214/1.

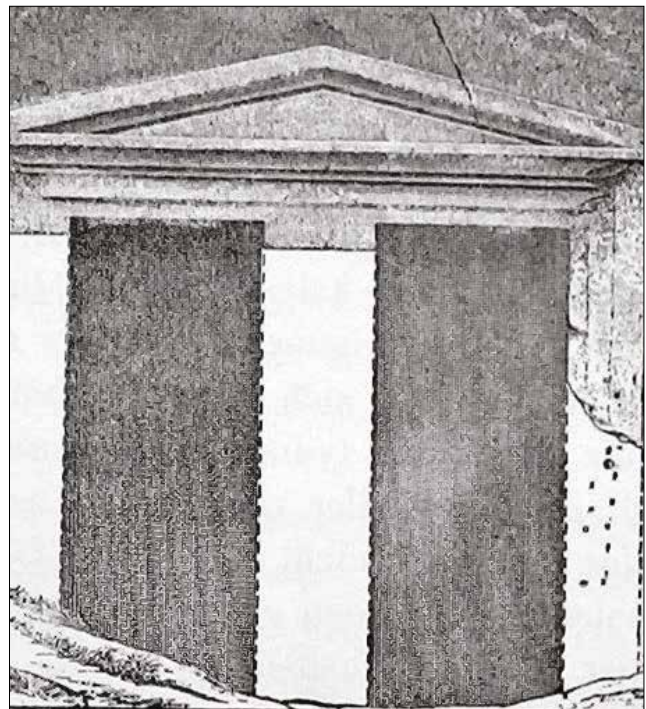


Figure 23: Kilise / Church (Koerte 1898: 142, Fig. 13)

wall, and one between door spaces, totally three blind windows along the door side. There also one at each in indent along the hall pediment side. The mentioned blind windows are within rectangular -more like asquare- two frames. On ceiling of the entrance hall, on the axis of the pilaster capitals there are four wood imitation ceiling

¹³ Reber 1897: 59, Fig. 11; Koerte 1898: 141-146, Figs. 13-15; Brandenburg 1907: 7; Brandenburg 1909: 146-147; Brandenburg 1914: 20, 62, 64; Gall 1966: 112; Haspels 1971: V.I, 158-161, V.II, Pl. 548-549; Belke-Mersich 1990: 260, 301-302; Kortanoğlu 2008: 59-60, 70, 81-82, 117, 123, 582-584, Pls. 213-218.

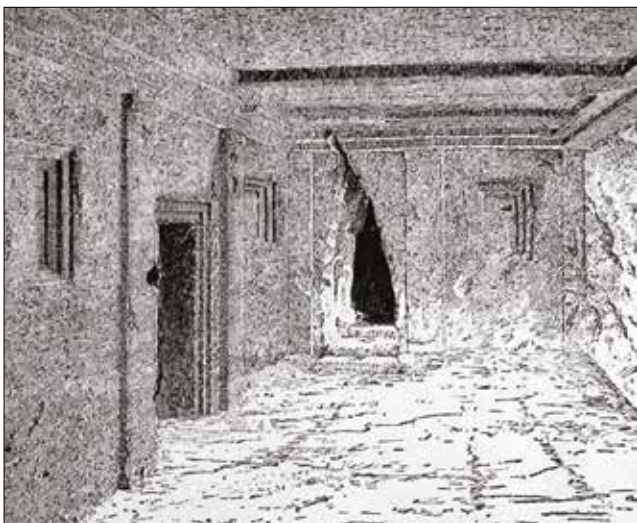


Figure 24: Kilise / Church (Koerte 1898: 144, Fig. 15)

support system reliefs. Between these reliefs there are rectangular -more like a square- coffer arrangements with two frames. Reber states that, wooden construction of the low ceiling in the entrance hall describes inside of residential architecture originating old times. On right hand side of the entrance hall, there is a third chamber unlike Gerdekkaya or Kırkgözkaya although the plan of the tomb is alike. Most probably this chamber was carved during Christian period after the tomb changed into a chapel.

Koerte states that tomb could be carved in 5th century BC and could be used as a tomb until 2nd century AD by comparing the tomb with Paphlagonia rock cut tombs. Reber dates the tomb chamber to late Hellenistic period. According to him the tomb was carved “before Christ was born”. Haspels dates the church's first use to Hellenistic period.¹⁴

Yapıldak 1 (Fig. 25):

Asarkaya/Asarkale rocks takes place in Eskişehir city, Seyitgazi district, on 200 m west of Yapıldak village where the tomb is located. Tombs on Asarkaya/Asarkale rocks are placed on two main rocks. Chamber tomb located on west side of the rocks on south headed toward west.¹⁵ Façade of the chamber tomb was formed in an appearance of column reliefs carrying a relief pediment. Pediment is 158 cm width and 80 cm height. Center and

¹⁴ Reber 1897: 58, Fig. 11; Koerte 1898: 141-146, Figs. 13-15; Brandenburg 1907: 7; 1909: 146-147; Haspels 1971: V.I, 158-161, V.2, Pls. 548-549; Belke-Mersich 1990: 260, 301-302; Kortanoğlu 2008: 582-584, Pls. 213-218.

¹⁵ Reber 1897: 66-68, Figs. 16, 18; Koerte 1898: 147; Haspels 1971: V.I, 182; Belke-Mersich 1990: 415; Kortanoğlu 2008: 57-58, 74, 98-99, 550-552, Pls. 155-160.

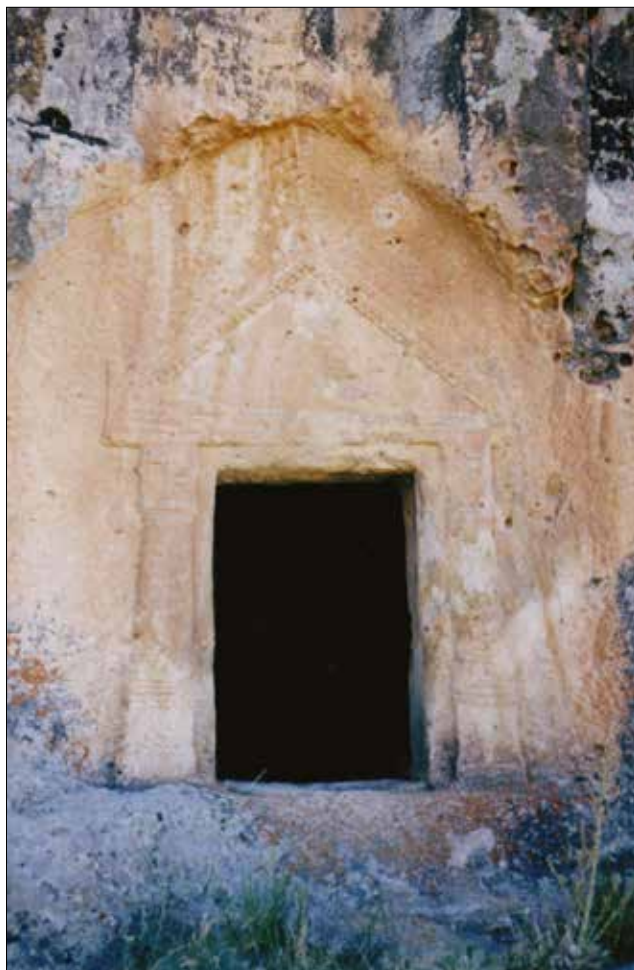


Figure 25: Yapıldak 1 (Kortanoğlu 2008: Pl. 155)

north side acroterions were preserved. There are dentil frieze reliefs within inner counters of the sides forming on pediment. On both sides there are 23 dentil reliefs. Geison between pediments floor and pilaster reliefs, arranged as a three fascia architrave and uniting together with a three fascia architrave. Bases of the column reliefs and threshold are on same level. Column reliefs were designed as pilasters with high capitals and basis.

Chamber tomb is evaluated between Roman Imperial period and Late Roman - Early Byzantine periods.

Yapıldak 2 (Figs. 26-29):

Chamber tomb was placed towards west on north rocks (see Yapıldak 1).¹⁶ Façade of the chamber tomb was formed by columns appear to carry pediment relief and tabula ansatas. On outer sides there were anta like (?), capital and base elements with each one quadrangle formed column relief and tabula ansatas and also tomb

¹⁶ Barth 1860: 94; Perrot-Chipiez 1890: 136; Ramsay 1889: 182-185, Figs. 29-30,33; Haspels 1971: V.I, 182, V.II, Fig. 324; Kortanoğlu 2008: 57-58, 74, 98-99, 497-500, Pls. 99-103.



Figure 26: Yapıldak 2 (Eser Kortanoğlu Arşivi)



Figure 29: Yapıldak 2 (Reber 1897: 68, Fig. 18)

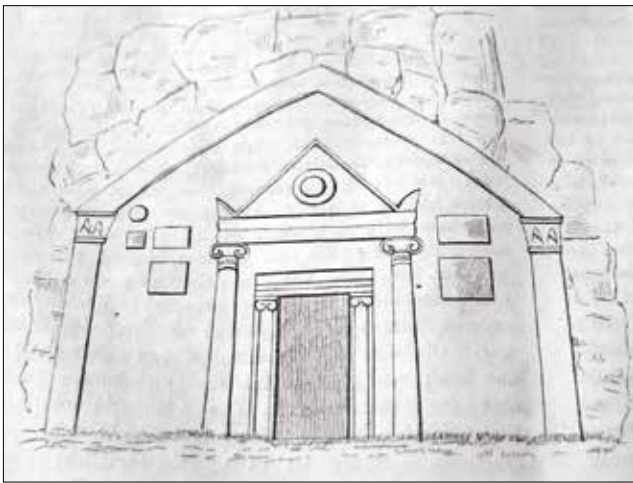


Figure 27: Yapıldak 2 (Barth 1860: 94)

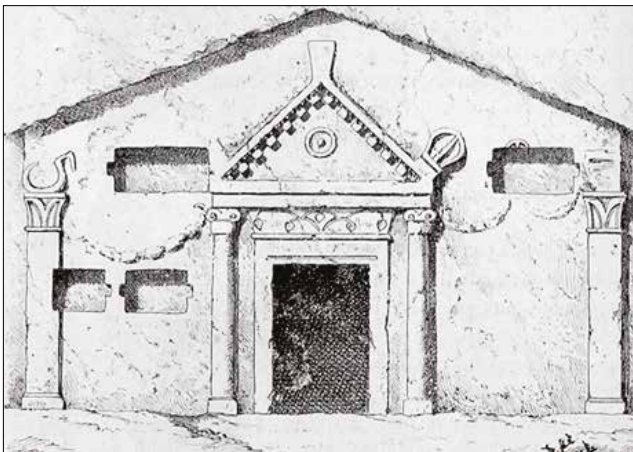


Figure 28: Yapıldak 2 (Ramsay 1889: 183, Fig. 29; Perrot-Chipiez 1890: 136)

carving were surrounded. Triangular pediment is 126 cm. height. Isosceles sides are 110 cm long. On north side of the tympanon there are six, on south side there are seven dentil reliefs takes place. There are two circular formed relief (shield ?) in one inside the other on thympanon. Inner relief has 20 cm diameter, outer relief has 40 cm

diameter. On rock block (architrave ?) between pediment and column capitals there is a very thin fascia horizontally cutting the block in half. Columns' basis looking as carrying the block formed from two parts. Sides of the capitals resemble volutes in ionic order. There is a 30 cm height kyma (?) relief between pediment and door section. First illustration of the chamber tomb was made by Barth. In illustrations on Ramsey's article, between pediment and door there is an arrangement formed with flowers. Also on the façade surface which cannot be traced now there are as Ramsay describes different objects and long chain. Moreover some of these as being under tabula ansatas gives a destroyed appearance. On door arrangement, lento was divided into half with a thin fascia.

Tabula ansatas were formed on rock block to north and to south from columns appearing to carry the pediment carving. There are three tabula ansatas on north and two on south. Chamber tomb is dated to Roman Imperial period.

Yapıldak 3 (Fig. 30-32):

Chamber tomb is placed on rocks on north (see Yapıldak 1 and Yapıldak 2) headed toward west.¹⁷ Façade of the chamber tomb was formed by arrangement of a triangular pediment relief within arch carving. Arch carving is 200 cm wide and 300 cm height. Triangular pediment is made up from two parts one within each other, it is 130 cm wide and 100 cm height. There are two circular formed reliefs (shield ?) within each other on tympanon (see Yapıldak 2). this circular relief forming outer circle is 40 cm diameter. Center and side acroterions were preserved. Chamber tomb is dated to Roman Imperial and late Roman periods.

¹⁷ Reber 1897: 66-67, Fig. 16; Kortanoğlu 2008: 74, 98-99, 500-502, Pls. 104-105.



Figure 30: Yapıldak 3 (Kortanoğlu 2008: Pl. 105/1)

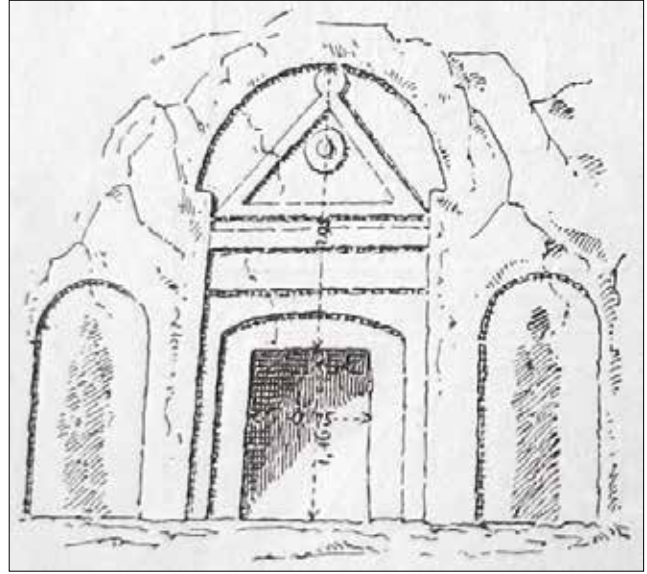


Figure 32: Yapıldak 3 (Reber 1897: 66, Fig. 16)

Ahlatçinler 1 (Figs. 33-34):

There are three individual rock masses in Ahlatçinler district within Afyon city borders. Chamber tomb is situated on east side of the rock mass in the middle, placed



Figure 31: Yapıldak 3 (Kortanoğlu 2008: Pl. 104/1)



Figure 33: Ahlatçinler 1 (Kortanoğlu 2008: Pl. 111/2)

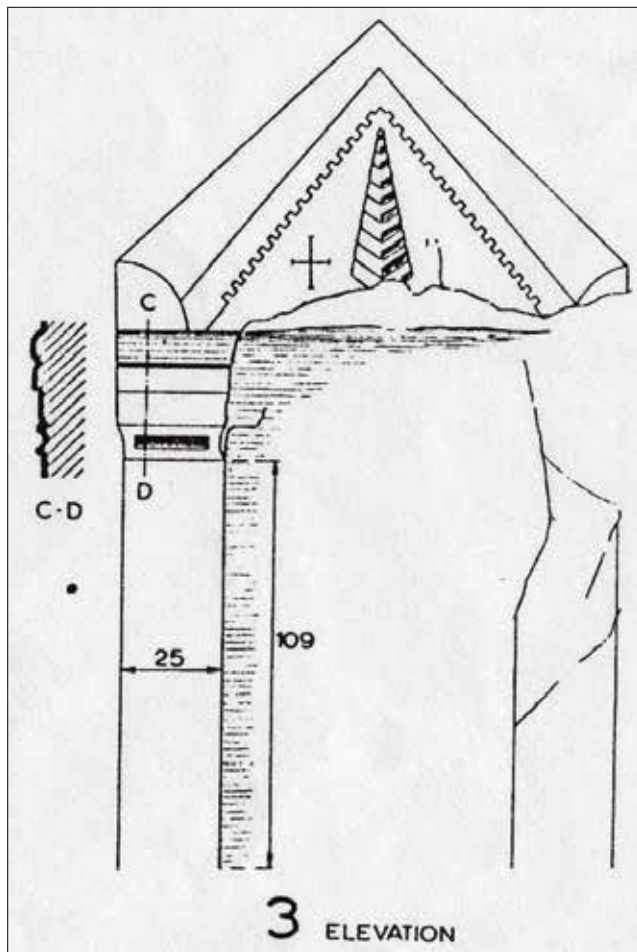


Figure 34: Ahlatçinler 1 (Haspels 1971: V.2, Pl. 555/3)

toward east and on ground level.¹⁸ Façade architecture of the chamber tomb was formed by a triangular pediment and a pine tree relief (height: 38 cm.) placed vertically within the pediment (Haspel states that the relief is a cypress or a fir tree, however considering intensity of pine trees in Highlands of Phrygia and comparing with this figure I think this relief is a pine tree). In Haspel's illustration, there is a cross on the left hand side of the tree relief. Unfortunately there is no trace today. On the pediment above tympanon on isosceles sides of the triangle there are dentil reliefs. Base of the pediment is 122 cm, equal sides are 85 cm height. Tympanon is 100 cm wide and 68 cm height. Pediment worked as though it is sitting on a pilaster. Only reliefs on south were preserved to present-day. Pilaster has the capital element. Chamber tomb is dated to Roman Imperial period.

Ahlatçinler 2 (Figs. 35-37):

In Ahlatçinler district (see Ahlatçinler 1), the façade of the chamber tomb which is located toward west on



Figure 35: Ahlatçinler and Ahlatçinler 2 (From R. Eser Kortanoğlu archives) / *Ahlatçinler ve Ahlatçinler 2* (R. Eser Kortanoğlu Arşivi)



Figure 36: Ahlatçinler 2 (Kortanoğlu 2008: Pl. 112/2)

a rock mass on east/southeast of the area was formed with a triangle pediment relief.¹⁹ Side acroterions are in protected situation. Pediment is 122 cm wide and 74 cm height. Tympanon is 89 cm wide and 59 cm height. There is a arch carving above tympanon on the pediment (49 cm diameter). In side the arch there is a circular relief

¹⁸ Haspels 1971: V.I, 173-174, V.II, Fig. 304, Pl. 555/3; Kortanoğlu 2008: 54, 72, 75-76, 111, 508-509, Pl. 111.

¹⁹ Haspels 1971: V.I, 173-174, V.II, Fig. 301, Pl. 555/2; Kortanoğlu 2008: 54, 72, 75-76, 111, 511-512, Pls. 111-112.

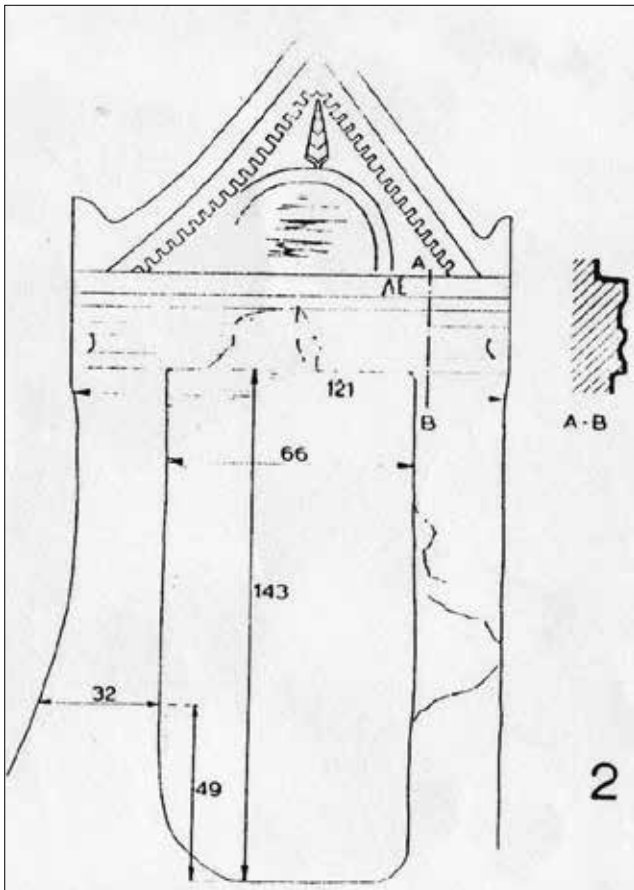


Figure 37: Ahlatçinler 2 (Haspels 1971: V.2, Pl. 555/2)



Figure 38: Ahlatçinler 3. Kortanoğlu 2008: pl. 112/3

trace resembling a head relief. Above the carving there is a vertical placed pine tree relief (see Ahlatçinler 1). On sides of the tympanon there are dentil reliefs. Under triangular pediment there is an architrave with three fascias. Both architrave and pediment were arranged as though they seem to be carried by pilasters. Pilasters take place on a base. The chamber tomb is dated to Roman Imperial period.

Ahlatçinler 3 (Figs. 38-39):

The chamber tomb headed towards south is situated on the rocky hill where Ahlatçinler 2 is (see Ahlatçinler 1 and 2), its façade is formed as triangular pediment.²⁰ Center and side acroterions are preserved. Center acroterion is in circular form. Pediment is arranged with three parts surrounding each other. Outer part is 148 cm wide and 56 cm height. Middle part is 41 cm height and inner part is 35 cm height. Tympanon is 103 cm wide and 34 cm height. There is a trace of circular formed relief on tympanon. Haspels states that the broken head on the pediment might be described as “Medusa”. On below parts of the pediment there is a geison or an architrave

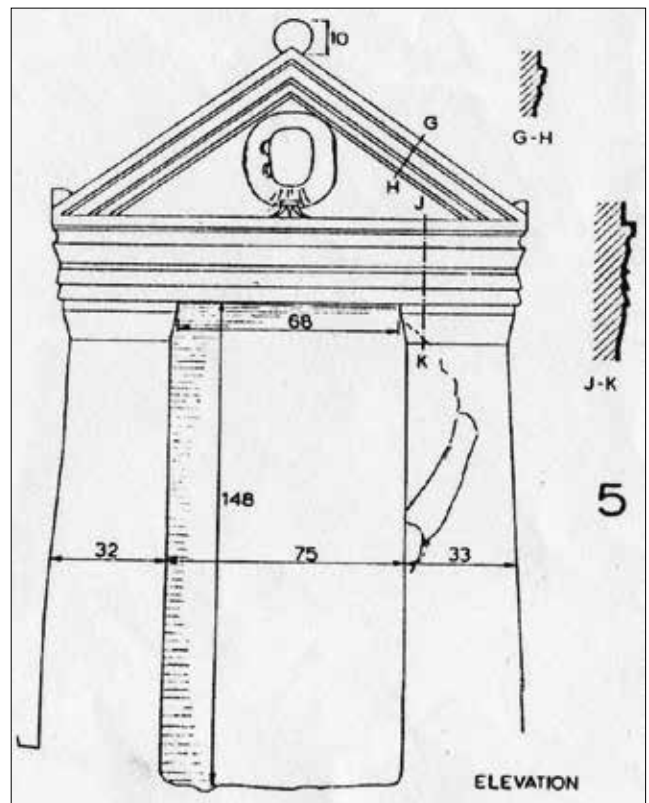


Figure 39: Ahlatçinler 3. Haspels 1971: V.2, Pl. 555/5

²⁰ Haspels 1971: V.I, 173-174, V.II, Fig. 302, Pl. 555/5; Kortanoğlu 2008: 54, 72, 75-76, 111, 512-514, Pls. 111-112.

or a geison combined with an architrave (?) arrangement takes place. This part profile is made up from five fascia. Profiles of the pediment and geison/architrave were illustrated by Haspels. On sides two pilasters with capitals appear as they carry the pediment. Chamber tomb is dated to Roman Imperial period.

Ahlatçinler 4 (Figs. 40-41):

The façade of the chamber tomb located on the same rock as Ahlatçinler 2 and 3 headed thru south is arranged as triangular pediment.²¹ Haspels expresses that façade of the chamber tomb is very well detailed comparing to others. The pediment is 118 cm wide and 77 cm height. Tympanon is 100 cm wide and 61 cm height. On outer sides of the pediment there are reliefs curving thru out and these reliefs are unique examples for this area. On inner sides of the isosceles pediment there are triangular reliefs instead of dentils. On the tympanon there is a relief of a yoke on two oxen heads with a plough. Haspels says that this is used especially on votive steles symbolizing husband and wife in Highlands of Phrygia. However as Haspels also states using of this description on a chamber tomb façade is a



Figure 40: Ahlatçinler 4 (Kortanoğlu 2008: Pl. 112/4)

unique example in Highlands of Phrygia. Waelkens thinks that these kinds of descriptions on tombs or on votive stones related to intensity of agriculture and liking of it, is related to the farming activities of the tombs owner/deceased made while living. A plough or a reaping hook with an oxen or a couple are some of these examples.²² On the right hand side of the mentioned relief, on tympanon wall a circular formed rosette was carved. Geison and architrave were formed as a rectangle narrowing towards down. In these parts and on plaster reliefs capitals there are reliefs in form of belt (leaf ?) in vertical line. Between two pilaster capitals a circular formed description takes place. Inside the circle a motive formed by three lines intersecting was placed. Chamber tomb was evaluated within Roman Imperial period.

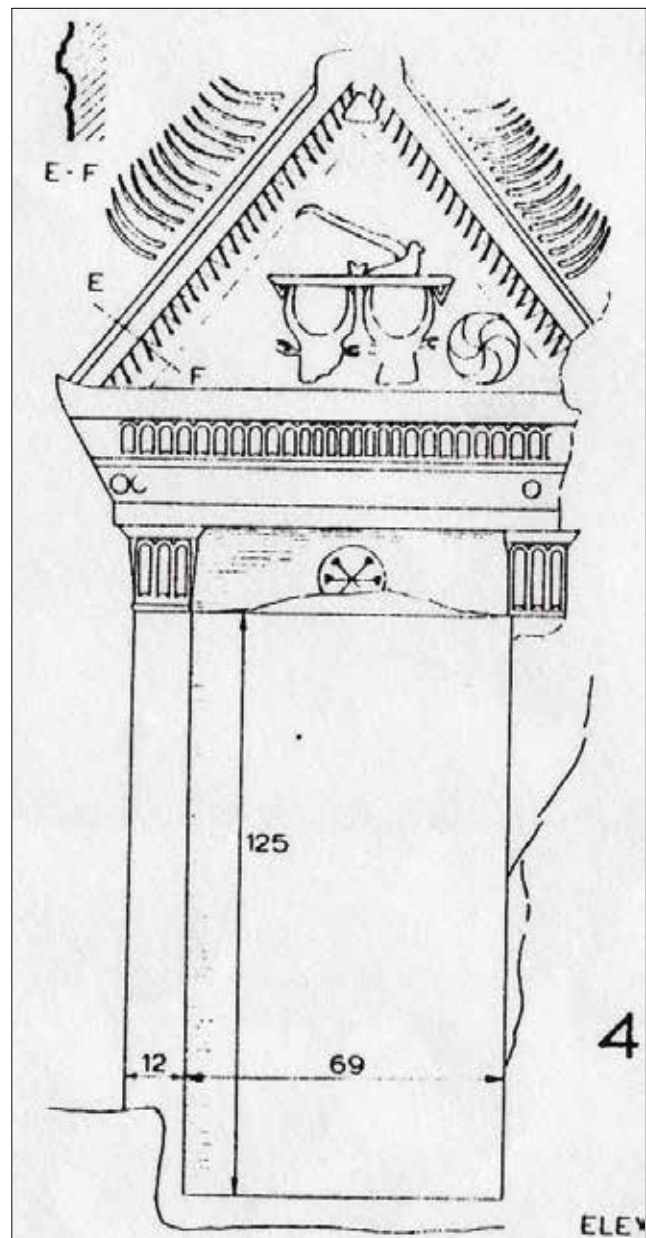


Figure 41: Ahlatçinler 4 (Haspels 1971: V.2, Pl. 555/4)

²¹ Haspels 1971: V.I, 173-174, V.II, fig. 303, Pl. 555/4; Kortanoğlu 2008: 54, 72, 75-76, 111, 514-515, Pl. 111-112.

²² Waelkens 1977: 283-285. For other researches Tritsch 1943: 113-115; Kelp 2008: 69-91; Kelp 2015.

Ayazın 1 (Figs. 42-46):

The chamber tomb in Afyon city, İhsaniye district, located towards northeast of Ayazın village is one of two chamber carvings which façade architecture known as



Figure 42: Ayazın 1 (From R. Eser Kortanoğlu Archives) / *Ayazın 1* (R. Eser Kortanoğlu Arşivi)



Figure 43: Ayazın 1 (Kortanoğlu 2008: Pl. 171/4)



Figure 44: Ayazın 1 (Kortanoğlu 2008: Pl. 170/2)

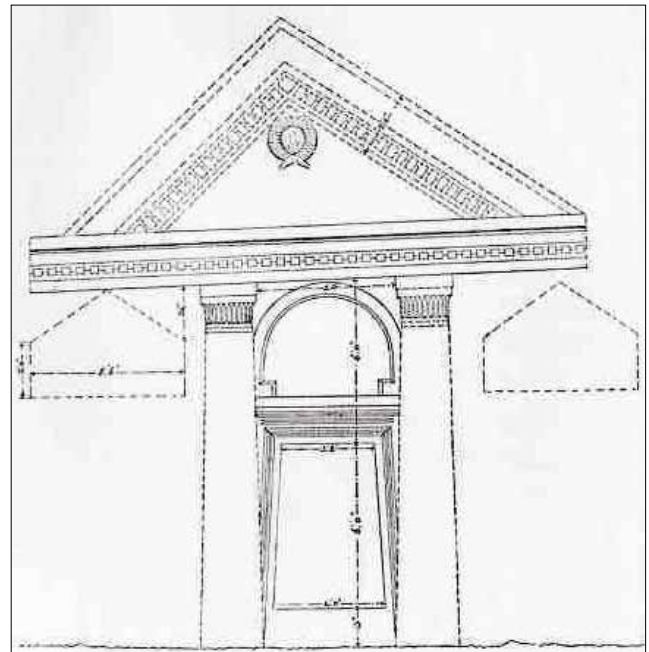


Figure 45: Ayazın 1 (Ramsay 1882: Pl. XXVI)

“Tomb with Lions”.²³ Ramsay express that the tomb was carved under influence of Greek art but it was hard to determine which period it belong to. Perrot also says that Ayazın tombs were carved under influence of Greek art and thinks that this chamber tomb belong to an important family of the region. Façade of the chamber tomb was formed in triangular pediment. Pediment surface is high and center is stoop straight. On the point where pediments stoop surfaces intersects there is a Medusa relief. Perrot cannot decide whether it is a Medusa relief or a simple garland. There are two triangular frames on corners of tympanon. There are five dentil reliefs on left hand side of the pediment, ten dentil reliefs on right hand side of the

²³ Ramsay 1882a: 17; Ramsay 1882b: 260-263, Pls. XXVI-XXVII; Ramsay 1888: 373; Perrot-Chipiez 1890: 125, 128, Fig. 77-81; Reber 1897: 64, Pl. 12; Koerte 1898: 147; Belke-Mersich 1990: 200; Kortanoğlu 2008: 59, 70, 72, 76, 88, 109-110, 554-558, Pls. 165-174.

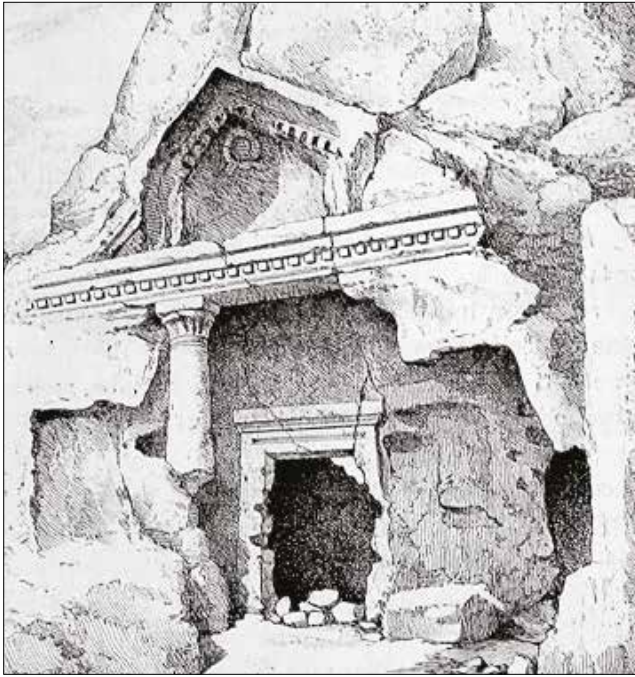


Figure 46: Ayazin 1 (Perrot-Chipiez 1890: 126)

pediment. There is no acroterion arrangements. There is 35 dentil reliefs on architrave. Reber states that there is a doric abacus on kalathos surrounded by akantus leaves. Doorway is formed by frame reliefs placed in each other. Below half of the frames were destroyed. On above the frames there is an arched pediment order. Relief in arched pediment was devastated. However from traces of relief it is thought to be a standing human with open arms it might get to that shape by time. On both sides of the arch, on a line straighten there are two “antithetic” lion reliefs. Ramsay says in his mentioned article that these two lion descriptions were carved with influence of “Phryg” art. Entrance hall was formed in the below part of the triangular pediment projecting outside.

In Ayazin rock architecture it is hard to differentiate between Roman Imperial, Late Roman - Early Byzantine. For this reason tombs and chamber tombs were evaluated between 2nd century AD and early Byzantine period.

Ayazin 2 (Figs. 47-50):

The façade of the chamber tomb in Ayazin village (see Ayazin 1) located towards southeast is one of the highest entrance carvings in Highlands of Phrygia.²⁴ The chamber is above six m. from ground. The outer element on the façade is triangular pediment carving. Pediment floor is about 250 cm wide. On tympanon wall there is a Medusa

²⁴ Ramsay 1882b: Pl. XXVII, n. 2; Reber 1897: 65-66, Fig. 15; Kortanoğlu 2008: 55, 58-59, 70, 72, 77, 109-110, 517-519, Pl. 116-120.



Figure 47: Ayazin 2 (Kortanoğlu 2008: Pl. 116/1)

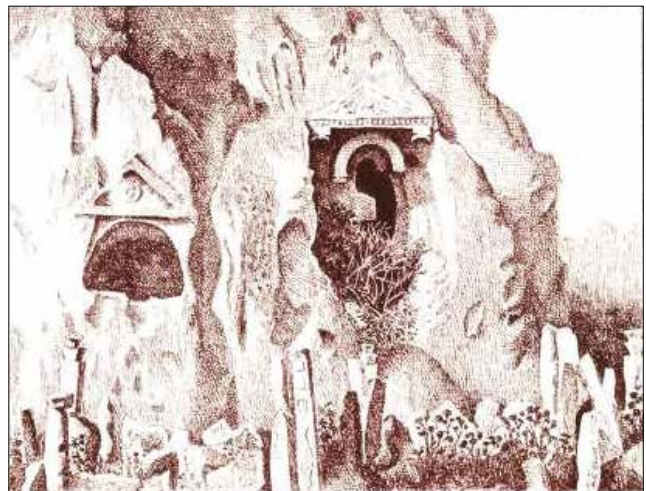


Figure 48: Ayazin 2 (Ramsay 1882: Pl. XXVII)

relief with face lines very damaged. On both sides of Medusa, there are lion reliefs situated like attacking each other. Besides between tympanon and geison a triangular frame borders the pediment wall. On this frame on left hand side three dentil reliefs were preserved. On above cornice (architrave ?) between geison and column capitals there are 23 dentil reliefs. Only capitals (abacus



Figure 49: Ayazın 2 (Kortanoğlu 2008: Pl. 117/1)



Figure 50: Ayazın 2 (Kortanoğlu 2008: Pl. 116/2)

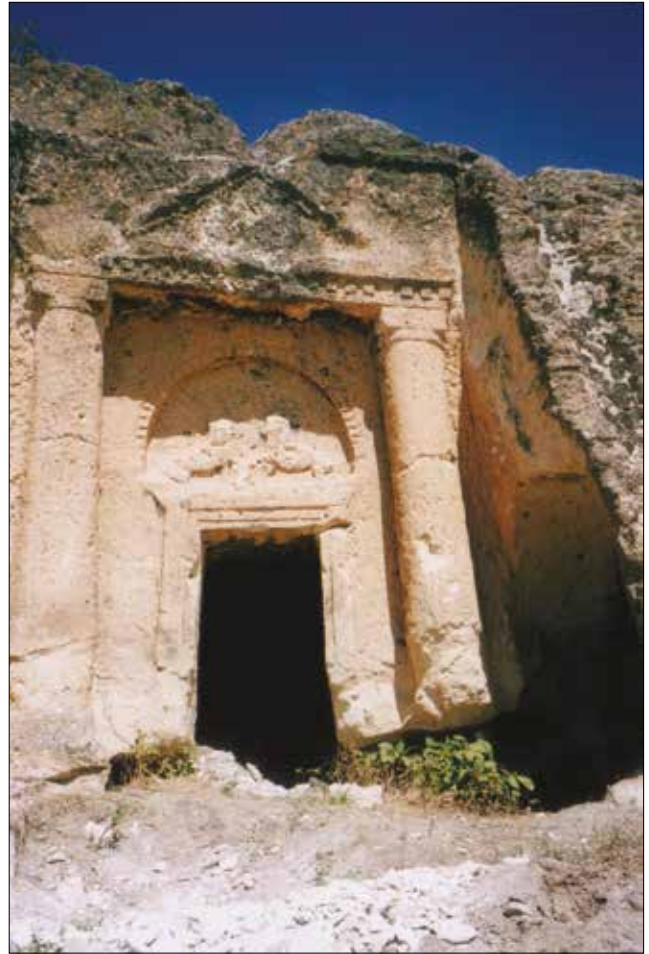


Figure 51: Ayazın 3. Kortanoğlu 2008: Pl. 125/4.

and echinus) of columns under this part were protected. On chamber tomb entrance there are two arch pediment placed within each other. On outer counters of the both arches there are continuous triangle ornaments. The inner arched pediment created chamber tomb entrance ends the entrance hall. Column capital (abacus and echinus) on left leg of the arch on outer arch pediment is protected.

Ayazın 3 (Fig. 51-54):

The monumental chamber tomb in Ayazın village (see Ayazın 1) located toward southeast is the other tomb with façade architecture known as “Tomb with Lions”.²⁵ Ramsay thinks that the chamber tomb might belong to a family. Façade of the chamber tomb was designed as two column reliefs seem to carry the triangular pediment. Circular formed relief on pediment wall is thought to be a shield or a Medusa. Although considering other examples in Ayazın this relief might be both of these I think this being a shield relief have more possibility. In Ramsay’s

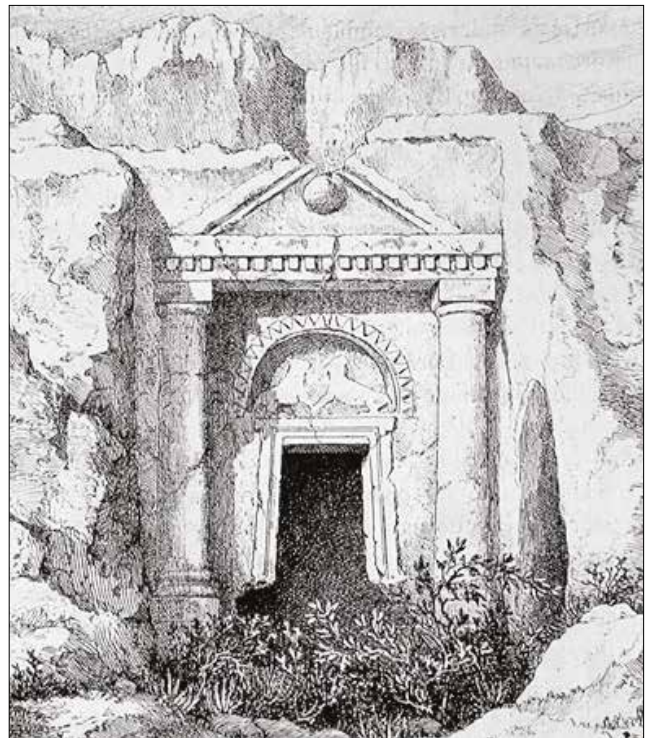


Figure 52: Ayazın 3. Perrot-Chipiez 1890: 139.

²⁵ Ramsay 1882b: 262, Pl. XXVIII, n.3; Reber 1897: 65; Perrot-Chipiez 1890: 139, Fig. 92; Haspels 1971: V.I, 172, V.II, Figs. 292-93; Kortanoğlu 2008: 70, 72, 77, 88, 109-110, 519-521, Pls. 121-128.



Figure 53: Ayazın 3 (Kortanoğlu 2008: Pl. 123)



Figure 54: Ayazın 3 (Kortanoğlu 2008: Pl. 126/2)

article a shield form was used in illustration and picture. Reber states that on sides of the pediment there were dentil relief ornaments. Now, dentil reliefs on geison can be traced (19 of them). Pediment is 270 cm wide and 70 cm height. An arched pediment was formed above door space. Triangular reliefs on the arch goes on along the line (29 of them). On wall of the arched pediment there are two lion reliefs facing each other which is typical for Phryg period Ayazın and Köhnüş valleys as Haspels states

a resemblance with chamber tomb with lion in Beyköy (a village near Ayazın town). Arched pediment is 170 cm wide and 90 cm height. Column reliefs were carved in an appearance close to plastic. Reber states that abacus being thick, heavy and large but achinus being low, thin and wide and shallow. Column base on left hand side was protected and in rectangular form. Columns are plain shaft. Entrance of the chamber tomb was formed by lintel and door chasing arranged with frames within each other.

Güllük (Figs. 55-56):

Façade of the chamber tomb in Afyon city, İhsaniye district, between Ayazın town and Basırlar village in Karababa valley, in the rocky area four-five km west of Ayazın, is 225 cm wide, 200 cm height, 10-20 cm deep and placed within an neatly carved arch.²⁶ Triangular pediment carving starts from six cm below the center point of the arch. Triangular pediment is 90 cm wide and 45 cm height there is a Medusa relief as also seen in many examples in Highland of Phrygia. As understood from traces 15 cm away from door space from both



Figure 55: Güllük (Kortanoğlu 2008: Pl. 139/1)



Figure 56: Güllük (Kortanoğlu 2008: Pl. 139/2)

²⁶ Kortanoğlu 2008: 55, 78, 110, 530-531, Pl. 139.

sides, there were pilasters appear to carry the triangular pediment. Chamber tomb was considered in Roman Imperial period.

Ayazın 4 (Figs. 57-59):

Chamber tomb located towards east in Ayazın town (see Ayazın 1) is one of the important examples of monumental arched façade arrangements in the area.²⁷ Façade is formed by a main arch and narrow arches on sides connected to it. Chamber tombs façade condition



Figure 57: Ayazın 4 (Kortanoğlu 2008: Pl. 132/1)



Figure 58: Ayazın 4 (R. Eser Kortanoğlu Arşivi)

today could be preserved as stated on Ramsay, Perrot-Chipiez and Reber's photographs and illustrations. On connection places on the arches there are full plastic two column carvings arranged very similar to ionic order column capitals. Legs of the arch sits on capitals of the full plastic columns. Columns were not preserved.

²⁷ Ramsay 1882 a: 17; Ramsay 1882 b: 263, pl. XXIX/6; Ramsay 1888: 373; Perrot-Chipiez 1890: 127-131, 140-141, fig. 82, 93-96; Reber 1897: 63, fig. 14, pl. 11; Koerte 1898: 146-148; Haspels 1971: V.I, 305, n.24; Belke-Mersich 1990: 200; Kortanoğlu 2008: 55, 70-72, 109-110, 521-523, pl. 129-133.



Figure 59: Ayazın 4 (Perrot-Chipiez 1890: 128)

Writers mentioned above named this order as "ionic column". Main arch is 200 cm. wide and 400 cm. height. Side arches are 80 cm. wide and about 300 cm. height. Column capital on north is 65 cm. wide on top point and 45 cm wide at the bottom, 15 cm. height and 80cm. Long. Volute like circular formed reliefs are almost 10 cm. diameter and again 80 cm. long. Monumental chamber tomb was considered between 3rd - 4th centuries AD.

Kümbet-Deliklikaya 2 (Fig. 60-62):

In Eskişehir city, Seyitgazi district, Kümbet village, 200 m. north of Kümbet-Deliklikaya 1 on south side of a rocky hill on a place close to peek and façade of the chamber tomb located towards southwest is formed by an arch carving (half circle form) and an architrave



Figure 60: Kümbet-Deliklikaya 2 (Kortanoğlu 2008: Pl. 95/2)

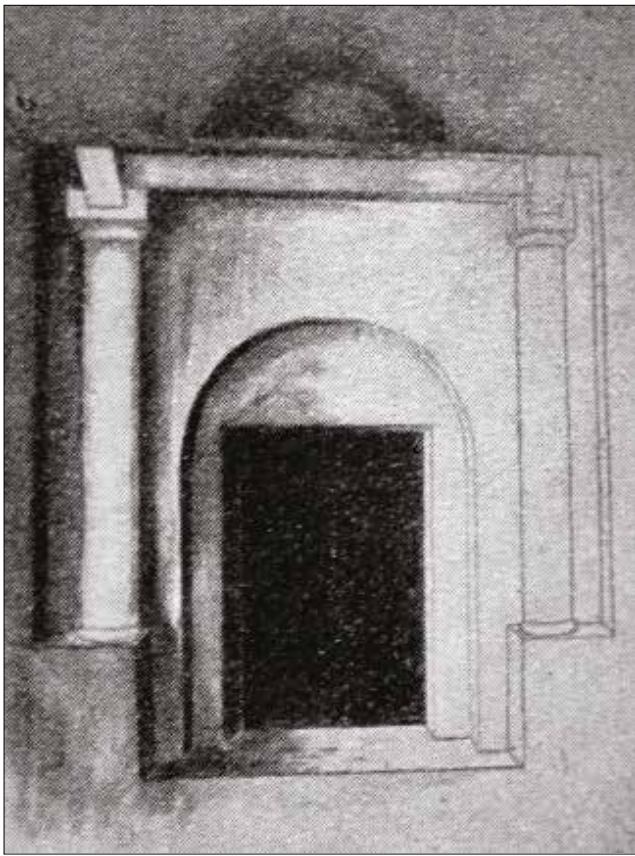


Figure 61: Kümbet-Deliklikaya 2 (Brandenburg 1906: 708, Fig. 65)

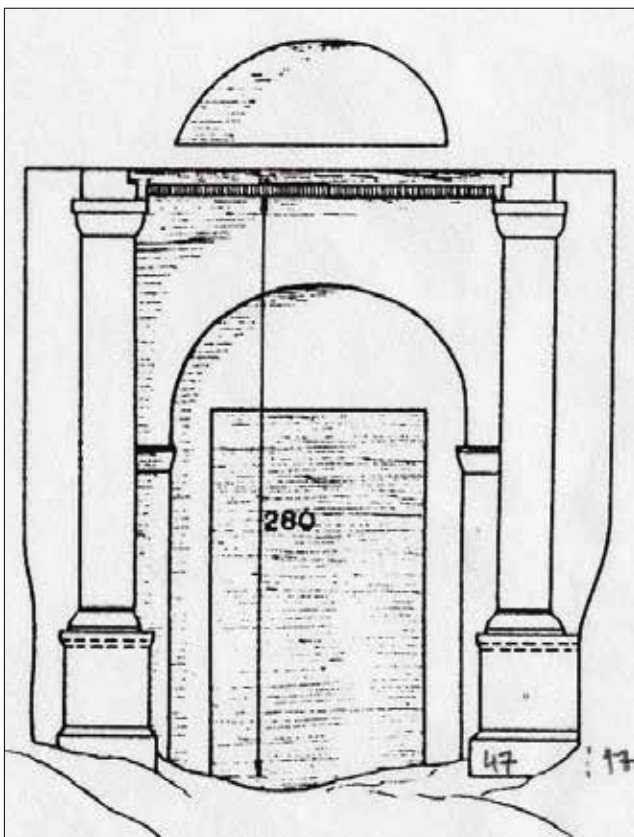


Figure 62: Kümbet-Deliklikaya 2 (Haspels 1971: V.2, Pl. 559/3)

seemed as though carried by column reliefs with capitals and bases on postament.²⁸ Arch carving is 123 cm wide, 52 cm height and 17 cm depth. Architrave arrangement with two levels is 176 cm wide, 15 cm height and 11 cm depth. Column reliefs are formed by capital, body, base forming abacus and echinus and bases on two level postament. Body of the column relief is 23 cm wide and 170 cm height. Between column reliefs and door space there is a second façade arrangement creating a front corridor. This arrangement was created by an arch its legs on anta capitals. This arch also closes the top of front corridor. Monumental chamber tomb was evaluated in Roman Imperial period.

Demirli (Figs. 63-64):

The chamber tomb headed to northeast is in Afyon city, İhsaniye district, between Demirli village and Demirlikale on north of the village, carved on a separate rock mass approximately on 500 m north of the village.²⁹ The façade of the chamber tomb was arranged by a truncated pediment. Truncated pediment of the chamber façade architecture can be thought as a minimalistic and a local adaptation in Highlands of Phrygia. Haspels think that this chamber tomb is representing a house. According to her upper floor on the façade copying a farm houses hayloft in highlands area. The façade is formed by two blind windows on both sides of the façade door, arched pediment placed above entrance and deep carvings both vertical (wide 265 cm) and horizontal (height 30-60 cm) on above part of the arch. Arch's diameter on the arched



Figure 63: Demirli (Kortanoğlu 2008: Pl. 180/1)

²⁸ Ramsay 1882a: 17; Ramsay 1882b: 263, Pl. XXIX/6; Ramsay 1888: 373; Perrot-Chipiez 1890: 127-131, 140-141, Fig. 82, 93-96; Reber 1897: 63, Fig. 14, Pl. 11; Koerte 1898: 146-148; Haspels 1971: V.I, 305, n.24; Belke-Mersich 1990: 200; Kortanoğlu 2008: 55, 70-72, 109-110, 521-523, Pls. 129-133.

²⁹ Reber 1897: 67, Fig. 17; Koerte 1898: 148; Haspels 1971: 176, V. II, Fig. 306, Pl. 557/5-8.; Belke-Mersich 1990: 232; Kortanoğlu 2008: 58, 70, 78, 112, 559-561, Pls. 180-182.

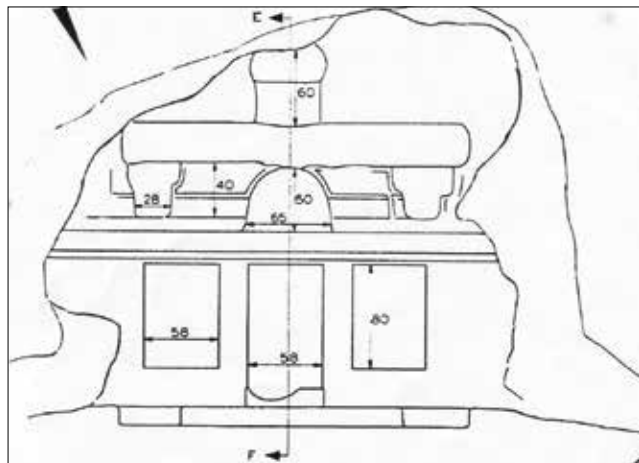


Figure 64: Demirli (Haspels 1971: V.2, Pl. 557/7)

pediment above entrance part is 65 cm. wide and 50 cm. height. Windows are 60 cm wide, 88 cm height and 5 cm deep. Monumental chamber tomb is considered between 2nd - 3rd centuries AD.

When 122 chamber tombs found in “Highlands of Phrygia” directions examined collectively for their directions, it can be seen that chamber tombs directed to west outstands the others. Furthermore when necropols taken individually, it is understood that tombs directions are placed according to topographic conditions and efficient use of rocks.³⁰ I doesn’t seem that any particular direction was picked. Taking 20 monumental chamber tombs in the text into consideration it is seen that no particular directions is chosen.

Chamber tombs with façade architecture arrangements are generally arched or with triangular pediment. In triangular pediment arrangement, pediment generally in appearance of carried by pilasters or column reliefs. In Imperial period triangular pediment arrangements, Medusa³¹ and shield reliefs³², acroterions with palmets and dentil frieze outstands. Besides analogies done for chamber tomb façades in Highlands of Phrygia and in Phrygia region, other Antique regions in Anatolia and for other types of tombs in Antique geographies, comparisons between especially with doorstones duplicating tomb façades in Highlands of Phrygia, doorstones carved in rock and Dokimeion type sacrophagus lids which are in close location to Highlands of Phrygia carries a big importance for both in dating and determination of relief figures and similarities in ornaments.³³ At the end of mentioned comparisons, from tomb typology angle of view, tombs dated to 2nd century AD and later, also dates to the same period and later from façade arrangement view.³⁴

³⁰ Kortanoğlu 2008: 122; Kortanoğlu 2012.

³¹ Kortanoğlu 2008c.

³² Kortanoğlu 2008b.

³³ Waelkens 1980; 1982; 1986; Lochman 2003; Kelp 2008: 69-91; Kelp 2015.

³⁴ Kortanoğlu 2008: 84-91, 125-126.

Surely a whole or a partion change of the tombs due to re-using must be taken into consideretion. Tombs which belong to “Phrygian” period and re-arranged in Imperial period, firstly used in Hellenstic period or carved in Imperial period had been used during Late Antique period.³⁵

Kümbet-Deliklikaya 1 and especially tombs like Zehran, are attracting attention with their façades geometrical ornaments were carved in “Phrygian” period. Also, in Highland of Phrygia.³⁶

Repeating of antithetic Kybele lions iconographic scene as can be seen in Aslantaş and Aslankaya which are “Phrygian” period monumental work of arts, on Roman Imperial period monumental chamber tomb façades carved earliest eight centuries later like in Ayazin, Beyköy and maybe Kümbet-Solon’s Tomb is a sure sign of influence of “Phrygian” rock carving tradition and influence of the goddess or a kind of continuous influence of the goddess.³⁷ Because it must be taken into consideration in researches related to the area that “Highlands of Phrygia” is in anyway goddess sacred area that belongs to her.

³⁵ Kortanoğlu 2011a; Kortanoğlu 2012.

³⁶ Sivas 2007a: 15-28; Sivas 2007b: 77-92.

³⁷ Kortanoğlu 2007; Kortanoğlu 2008: 124; Kortanoğlu 2011b; Kortanoğlu 2012. Also for a larger perspective on Phryg Goddess please see.: Prof. Dr. Fahri Işık and Prof. Dr. Taciser Sivas bibliography.

BIBLIOGRAPHY and ABBREVIATIONS

- AKURGAL, E., 1961.
Die Kunst Anatoliens von Homer bis Alexander. Berlin.
- AKURGAL, E., 1987.
Anadolu Uygarlıkları. İstanbul.
- AM Mitteilungen des Deutschen Archäologischen Instituts, Athenische Abteilung.
- BARTH, H., 1860.
"Reise von Trapezunt durch die nördliche Hälfte Klein-Asiens nach Scutari im Herbst 1958", PGM III: 3-105.
- BELKE, K./MERSICH, N., 1990.
TIB 7: Phrygien und Pisidien. Wien.
- BERNDT, D., 2002.
Midasstadt in Phrygien. Eine sagenumwobene Stätte im Anatolischen Hochland. Mainz Am Rhein.
- BRANDENBURG, E., 1906.
Neue Untersuchungen im Gebiet der Phrygischen Felsenfassaden. München.
- BRANDENBURG, E., 1907.
"Klein-Asiatische Untersuchungen I", OLZ X: 3-8.
- BRANDENBURG, E., 1909.
"Klein-Asiatische Untersuchungen III", OLZ XII: 145-154.
- BRANDENBURG, E., 1914.
"Über Felsarchitectur im Mittelmeergebiet", Mitteilungen der Vorderasiatischen Gesellschaft XIX: 1-96.
- FEDAK, J., 1990.
Monumental Tombs of the Hellenistic Age: A Study of Selected Tombs from the Pre-Classical to the Early Imperial Era. Toronto.
- GABRIEL, A., 1965.
Phrygie. Exploration Archéologique IV. La Cité de Midas Architecture. Paris.
- GALL, H. von., 1966.
Die paphlagonischen Felsgräber. Tübingen.
- HASPELS, C.H.E., 1971.
The Highlands of Phrygia. Sites and Monuments I-II. Princeton.
Ist Mitt Istanbuler Mitteilungen.
JHS The Journal of Hellenic Studies.
- KELPU., 2008.
"Neue Funde und Forschungen in Phrygien", Asia Minor Studien 61: 69-91.
- KELPU., 2015.
Grabdenkmal und lokale Identität. Ein Bild der Landschaft Phrygien in der römischen Kaiserzeit. Bonn.
- KOERTE, A., 1898.
"Kleinasiatische Studien III. Die phrygischen Felsendenkmäler", AM XXIII: 80-153.
- KORTANOĞLU, R.E., 2007.
"Dağlık Phrygia'da Aslan Kabartmalı Roma İmparatorluk Dönemi Kaya Mezarları", Belkıs Dinçol ve Ali Dinçol'a Armağan / VITA Festschrift in Honor of Belkıs Dinçol and Ali Dinçol. İstanbul: 417-431.
- KORTANOĞLU, R.E., 2008.
Hellenistik ve Roma Dönemlerinde Dağlık Phrygia Bölgesi Kaya Mezarları. Eskişehir.
- KORTANOĞLU, R.E., 2008b.
"Phrygia'da Makedonia Kalkan Bezemeleri İle Süslenmiş Bir Kaya Mezarı ve Mezar Sahibinin Kökeni Üzerine", Prof. Dr. Haluk Abbasoğlu'na 65. Yaş Armağanı. Euergetes / Festschrift für Prof. Dr. Haluk Abbasoğlu zum 65. Geburtstag. Antalya: 735-745.
- KORTANOĞLU, R.E., 2008c.
"Phrygia Kayalıklarında Konumlandırılmış Medusalar", Muhibbe Darga Armağanı. İstanbul, Sadberk Hanım Müzesi Yayını, 321-334.
- KORTANOĞLU, R.E., 2011a.
"koimáomai (Dormir)", Özsait Armağanı. Mehmet ve Nesrin Özsait Onuruna Sunulan Makaleler/Studies Presented to Mehmet and Nesrin Özsait. İstanbul: 277-286.

KORTANOĞLU, R.E., 2011b.

“Rock-cut Tombs Which are Located in the Highlands of Phrygia: An Analysis within the Frame of Hellenistic and Roman Imperial Periods in Context of Typology and Façade Carving”, The IIIrd International Symposium of Archaeology (Kütahya Dumlupınar University, University of Freiburg, DAI-İstanbul). İstanbul: 94-121.

KORTANOĞLU, R.E., 2012.

“Dağlık Phrygia Bölgesi Hellenistik ve Roma Dönemi Kaya Mezarlarında Frig Etkileri / Phrygian Influences on the Hellenistic and Roman Rock-cut Tombs of the Phrygian Highlands”, Frigler. Midas’ın Ülkesinde, Anıtların Gölgesinde / Phrygians. In the Land of Midas, In the Shadow of Monuments (Eds. T. Tüfekçi Sivas / H. Sivas). İstanbul: 288-307.

KORTANOĞLU, R.E., 2015.

“Monumentality upon Logos: Tomb Architecture in the Sacred Area of Phrygia, Significance and New Interpretations”, The Phrygian Lands over from Prehistory to the Middle of the 1st Millennium AD, (Anadolu University, Eskişehir, 2-8.11.2015). Eskişehir: 10-11.

LABORDE, L. de., 1838.

Voyage de L’Asie Mineure. Paris.

LEAKE, W.M., 1824 (1976).

Journal of a Tour in Asia Minor. With Comparative Remarks on the Ancient and Modern Geography of that Country. London.

LOCHMAN, T., 2003.

Studien zu kaiserzeitlichen Grab-und Votivreliefs aus Phrygien. Basel.

MKKS Müze Kurtarma Kazıları Semineri. Kültür ve Turizm Bakanlığı Yayınları. Ankara.

OLZ Orientalistischen Litteratur Zeitung.

ÖZÇATAL, M.F., 1993.

“Gerdekkaya ve Yazılıkaya’da 1991 Yılı Çalışmaları”, MKKS 3: 419-439.

PERROT, G., 1890.

Histoire de L’Art dans L’Antiquité V: Perse, Phrygie, Lydie et Carie, Lycie, Paris. Librairie Hachette.

PGM Petermanns geographische Mitteilungen.

RADET, G., 1895.

“En Phrygia, Rapport sur une Mission Scientifique en Asie Mineure (1895)”, Nouvelles Archives des Missions Scientifiques et Littéraires VI: 425-594.

RAMSAY, W.M., 1882a.

“Studies in Asia Minor. Part I: The Rock Necropoleis of Phrygia”, JHS III: 1-68.

RAMSAY, W.M., 1882b.

“Some Phrygian Monuments”, JHS III: 256-263.

RAMSAY, W.M., 1888.

“A Study of Phrygian Art I”, JHS IX: 350-382.

RAMSAY, W.M., 1889.

“A Study of Phrygian Art II”, JHS X: 147-189.

REBER, F. von., 1897.

Die phrygischen Felsendenkmäler. Munchen.

SİVAS, T., 1999.

Eskişehir-Afyonkarahisar-Kütahya İl Sınırları İçindeki Phryg Kaya Anıtları. Eskişehir.

SİVAS, T., 2007a.

“Frigler ve Frig Uygarlığı / Phrygians and The Phrygian Civilization”, Friglerin Gizemli Uygarlığı / The Mysterious Civilization of the Phrygians (Eds. T. Tüfekçi Sivas / H. Sivas). İstanbul: 15-28.

SİVAS, T., 2007b.

“Batı Frigya’da Frig Yerleşmeleri ve Kaya Anıtlarının Araştırılması / Survey of Phrygian Settlements and Rock-cut monuments in Western Phrygia”, Friglerin Gizemli Uygarlığı / The Mysterious Civilization of the Phrygians (Eds. Taciser Tüfekçi Sivas – Hakan Sivas) İstanbul: 77-92.

SİVAS, T., 2008.

“Frigler”, National Geographic. Ocak: 58-79.

SİVAS, T., 2010.

“Frig Vadileri’nden Günümüze Kalan Frig İzleri”, Frig Vadileri. Eskişehir: 16-53.

SİVAS, T., 2012.

“Frig Vadileri ve Kutsal Yazılıkaya-Midas Kenti / Phrygian Valleys and Sacred Yazılıkaya-Midas City”, Frigler. Midas’ın Ülkesinde, Anıtların Gölgesinde / Phrygians. In the Land of Midas, In the Shadow of Monuments (Eds. T. Tüfekçi Sivas/H. Sivas). İstanbul: 112-159.

TIB Tabula Imperii Byzantini

TEXIER, C., 1862 (2002).

Küçük Asya. Coğrafyası, Tarihi ve Arkeolojisi (Çev. A. Suat) Ankara.

TRITSCH, F.J., 1943.

“False Doors on Tombs”, JHS LXIII: 113-115.

WAEKENS, M., 1977.

“Phrygian Votive and Tombstones as Sources of the Social and Economic Life in Roman Antiquity”, Ancient Society VIII: 277-315.

WAEKENS, M., 1980.

“The Doorstones of Phrygia”, Yayla III: 12-16.

WAEKENS, M., 1982.

Dokimeion. Die Werkstatt der Repräsentativen Kleinasiatichen Sarkophage. Berlin.

WAEKENS, M., 1986.

Die Kleinasiatichen Türsteine. Typologische und epigraphische Untersuchungen der kleinasiatichen Grabreliefs mit Scheintür. Mainz.