

Enantiomeric Distribution of Some Linalool Containing Essential Oils and Their Biological Activities

Temel Özek^{1*}, Nurhayat Tabanca², Fatih Demirci¹, David E. Wedge² and K. Hüsnü Can Başer¹

¹ Department of Pharmacognosy, Faculty of Pharmacy, Anadolu University, 26470 Eskişehir, Turkey

² USDA-ARS-NPURU, University of Mississippi, University, MS 38677, USA

(Received August 17,2010; Accepted August 26, 2010)

Abstract: The enantiomeric composition of linalool was determined in 42 essential oils using chiral columns. Essential oils were analyzed by multidimensional gas chromatography-mass spectrometry using a non-chiral and chiral FSC columns combination with modified γ -cyclodextrine (Lipodex E) as the chiral stationary phase without previous isolation of the compound from the mixture. The essential oils of *Achillea*, *Ballota*, *Calamintha*, *Micromeria*, *Hedychium*, *Tanacetum*, *Coriandrum*, *Xanthoxylum*, *Ocimum*, *Thymus*, *Lavandula*, *Elettaria*, *Cinnamomum*, *Salvia*, *Origanum*, *Satureja*, *Nepeta*, *Stachys* were used as source material for enantiomeric separation of linalool. Enantiomeric distribution of linalool showed (-)-linalool was much more common than the (+)-linalool in the essential oils in this study. (-)- and (+)-linalool enantiomers were evaluated for antimicrobial, antifungal and antimalarial activities. Both enantiomers demonstrated approximately 50% growth inhibition of *Botrytis cinerea* at 48 hrs.

Keywords: Linalool; Chiral separation; Enantiomer; MDGC-MS; Lipodex E; *Colletotrichum*; Biological activity ; Essential oil

1. Introduction

Chiral compounds frequently occur in plant extracts such as essential oils and flavoring agents. These compounds exist as optical isomers, or enantiomers, which are non-superimposable mirror images of one another and differ only in their interaction with polarized light [1,2]. Enantiomers have identical physical properties such as boiling point, melting point and spectroscopic features [2]. However, enantiomers may possess different aroma and flavor characteristics that can affect quality of essential oils and flavor extracts. Chiral compounds may also exhibit differences in toxicity and biological activity as seen in the greater activity of (-)-ephedrine as compared to low activity in (+)-ephedrine.

Compounds occurring in nature typically exist as one predominant optical form dextrorotatory-isomer (*d*) that rotates the plane to the right (*clockwise*) is designated (+) and levorotatory-isomer (*l*) that rotates the plane to the left (*counterclockwise*) is designated (-) [1,2].

* Corresponding author: E-Mail: tozek@anadolu.edu.tr ; Phone.: +90-222-3350580 / 3719; Fax: +90-222-3306809

Linalool (*syn* : 3,7-dimethyl-1,6-octadien-3-ol) is one of the most important compounds to the perfume and flavor industries and is found in large amounts in several plant species. Since linalool is an important intermediate in the manufacture of vitamin E, large-scale processes have been developed for its production. Because of its high volatility industry, it gives naturalness to top notes to the oil. It is used frequently in perfumery and many flowery fragrance compositions for fruity-fresh odors like neroli, lavender, lily of the valley [3-7].

Linalool occurs naturally as two isomeric forms. The levorotatory isomer is 3R(-)-linalool called licareol that has a lavender or lily-of-the-valley odor. Licareol is a colourless liquid and practically insoluble in water, miscible with alcohol and ether [3,6]. The dextrorotatory isomer is 3S-(+)-linalool called coriandrol, has a herbaceous and musty green smell, and is often the main component in a number of essential oils [4]. Coriandrol is also a colourless liquid soluble in alcohol [3,6]. The specific rotation of linalool reported in the literature as $[\alpha]_D = -20$ to $+19$ [3].

In this study, essential oils obtained by hydrodistillation from different plant species were analyzed by GC/MS and then enantiomeric separations were determined by MDGC/MS. To determine if any difference in biological activities existed for each enantiomer of linalool, chromatographic and biological assays were carried out. For this purpose, we evaluated linalool enantiomers for antimalarial and antimicrobial activity against human pathogenic bacteria and fungi. Linalool enantiomers were also evaluated for activity against three important plant pathogenic fungi *Colletotrichum* species using direct-bioautography. Licareol and coriandrol were subsequently tested for activity using a dose-response format in micro-dilution broth assays against *Colletotrichum acutatum*, *C. fragariae*, *C. gloeosporioides*, *Fusarium oxysporum*, *Botrytis cinerea*, *Phomopsis obscurans* and *P.viticola*.

2. Materials and Methods

2.1. Preparation of essential oils

Essential oils of 42 different plant materials used in this investigation were hydro-distilled in our laboratory using a Clevenger apparatus or purchased from commercial sources. Sources of plant materials and essential oil percent yields, calculated on moisture-free basis are shown in Table 1.

2.2. Isolation of (-) and (+)-linalool

Origanum majorana and *Satureja spinosa* essential oils were used to obtain (-) and (+)-linalool. *Origanum majorana* oil (100 mg) was subjected to High Performance Flash Chromatography system (HPFC, Biotage, Inc., Horizon™ Pump, Charlottesville, Virginia) using a Biotage SI 12M column (150 x 12 mm i.d.; 9 g KP-Sil™ silica; 40-63 μm particle size; flow rate: 5.0 mL/min) and eluted with n-hexane containing increasing amounts of Et₂O (to 5%) to give 15 fractions (F₁-F₁₆). Fraction 6 (hexane: Et₂O, 97:3, v/v) yielded 5.0 mg of (-)-linalool. *Satureja spinosa* oil (80 mg) was subjected to HPFC system and same separation conditions were as described above to yield 3.0 mg of (+)-linalool. Both enantiomers were then re-analyzed by GC/MS to confirm their identity.

Table 1. The sources of plant materials and oil yields of the essential oil samples.

Essential Oil	Family	Source	Type of Obtaining Method	Oil Yield (%)
<i>Achillea grandifolia</i> Friv.	Asteraceae	Turkey	Hydro-distillation	-
<i>Achillea millefolium</i> L.	Asteraceae	Turkey	Hydro-distillation	0.27
<i>Ballota sechmenii</i> Gemici & Leblebici	Lamiaceae	Turkey	Hydro-distillation	0.02
<i>Calamintha tauricola</i> P.H. Davis	Lamiaceae	Turkey	Hydro-distillation	0.02
<i>Cinnamomum tamala</i> (Buch.-Ham.) T.Nees & C.H.Eberm.	Lauraceae	Pakistan	Hydro-distillation	-
<i>Coriandrum sativum</i> L.	Apiaceae	Pakistan	Hydro-distillation	2.22
<i>Elettaria cardamomum</i> Maton	Zingiberaceae	Pakistan	Hydro-distillation	-
<i>Hedychium flavum</i> Roxb.	Zingiberaceae	Madagascar	Commercial sources	-
<i>Lavandula angustifolia</i> Mill.	Lamiaceae	Turkey	Commercial sources	-
<i>Micromeria juliana</i> (L.) Bentham ex Reichb.	Lamiaceae	Turkey	Hydro-distillation	0.05
<i>Nepeta cadmea</i> Boiss.	Lamiaceae	Turkey	Hydro-distillation	0.41
<i>Nepeta cataria</i> L.	Lamiaceae	Turkey	Hydro-distillation	0.65
<i>Nepeta conferta</i> I.C. Hedge & J.M. Lamond	Lamiaceae	Turkey	Hydro-distillation	0.10
<i>Nepeta flavida</i> A. Huber-Morath	Lamiaceae	Turkey	Hydro-distillation	1.35
<i>Nepeta italica</i> L.	Lamiaceae	Turkey	Hydro-distillation	1.43
<i>Ocimum basilicum</i> L.	Lamiaceae	Nepal	Commercial sources	-
		Turkey	Hydro-distillation	0.29
		Turkey	Hydro-distillation	-
<i>Origanum floribundum</i> Munby	Lamiaceae	Turkey	Hydro-distillation	-
<i>Origanum majorana</i> L.	Lamiaceae	Turkey	Commercial sources	-
			Hydro-distillation	5.20
<i>Origanum micranthum</i> Hort. ex Colla	Lamiaceae	Turkey	Hydro-distillation	0.38
<i>Origanum onites</i> L.	Lamiaceae	Turkey	Hydro-distillation	-
				2.80
<i>Salvia microstegia</i> Boiss. & Bal.	Lamiaceae	Turkey	Hydro-distillation	0.05
<i>Salvia multicaulis</i> Vahl	Lamiaceae	Turkey	Hydro-distillation	0.13
<i>Salvia palaestina</i> Benth.	Lamiaceae	Turkey	Hydro-distillation	0.27
<i>Salvia sclarea</i> L.	Lamiaceae	Turkey	Hydro-distillation	1.15
<i>Salvia trichoclada</i> Benth.	Lamiaceae	Turkey	Hydro-distillation	0.27
<i>Salvia viridis</i> L.	Lamiaceae	Turkey	Hydro-distillation	0.27
<i>Satureja pilosa</i> Velen.	Lamiaceae	Turkey	Hydro-distillation	-

Essential Oil	Family	Source	Type of Obtaining Method	Oil Yield (%)
<i>Satureja spinosa</i> L.	Lamiaceae	Turkey	Hydro-distillation	0.47
<i>Stachys antalyensis</i> Y. Ayasligil & P.H. Davis	Lamiaceae	Turkey	Hydro-distillation	0.18
<i>Tanacetum chiliophyllum</i> Sch. Bip. var. <i>monocephalum</i> Grierson	Asteraceae	Turkey	Hydro-distillation	0.17
<i>Thymus cherlerioides</i> Vis.	Lamiaceae	Turkey	Hydro-distillation	0.06
<i>Thymus fedtschenkoi</i> Ronniger var. <i>handelii</i> (Ronniger) Jalas	Lamiaceae	Turkey	Hydro-distillation	0.23
<i>Thymus leucostomus</i> Hausskn. & Velen. var. <i>argillaceus</i> Jalas	Lamiaceae	Turkey	Hydro-distillation	0.92
<i>Thymus leucostomus</i> Hausskn. & Velen. var. <i>leucostomus</i>	Lamiaceae	Turkey	Hydro-distillation	0.41
<i>Thymus longicaulis</i> C. Presl ssp. <i>longicaulis</i> var. <i>subisophyllum</i>	Lamiaceae	Turkey	Hydro-distillation	1.70
<i>Thymus migricus</i> Klokov & Des. - Shost.	Lamiaceae	Turkey	Hydro-distillation	-
<i>Thymus praecox</i> Opiz var. <i>arcticus</i> (Durand) T. Karlsson	Lamiaceae	Germany	Hydro-distillation	-
<i>Thymus pseudopulegioides</i> Klokov & Des.-Shost.	Lamiaceae	Turkey	Hydro-distillation	0.60
<i>Thymus revolutus</i> Celak	Lamiaceae	Turkey	Hydro-distillation	0.38
<i>Thymus sibthorpii</i> Benth.	Lamiaceae	Turkey	Hydro-distillation	1.30
<i>Thymus zygoides</i> Griseb. var. <i>zygoides</i>	Lamiaceae	Turkey	Hydro-distillation	1.12
<i>Xanthoxylum armatum</i> D.C.	Rutaceae	Nepal	Commercial sources	-

2.3. GC/MS Conditions

Oils were analyzed by GC/MS using a Hewlett Packard GCD System (SEM Ltd., Istanbul, Turkey). The identification of the separated volatile organic compounds was achieved through retention indices and mass spectrometry by the comparing mass spectra of the unknown peaks with those stored in the Wiley GC/MS Library, MassFinder and the in-house "Baser Library of Essential Oil Constituents" which includes over 3200 genuine compounds with MS and retention data. n-Alkanes (C₉-C₂₀) were used as reference points in the calculation of retention indices. HP-Innowax FSC column (60 m x 0.25 mm, 0.25 µm film thickness) was used with helium as carrier gas (1.0 mL/min). GC oven temperature was kept at 60°C for 10 min and programmed to 220°C at a rate of 4°C/min, and kept constant at 220°C for 10 min and then programmed to 240°C at a rate of 1°C/min. Split ratio was adjusted at 50:1. The injector temperature was 250°C. Mass spectra were taken at 70 eV. Mass range was from *m/z* 35 to 450.

2.4. MD-GC/MS Conditions

Chiral separations were performed on a multidimensional gas chromatography-mass spectrometry (MDGC/MS) system (SEM Ltd., Istanbul, Turkey). The system was equipped with two oven gas chromatographs, two independent temperature controls and connected with Cooled Injection System (CIS), Cryo-Trap System (CTS) and a Multi-Column Switching (MCS) system. The pre-column was equipped with a FID detector (250°C) and the main column was connected with MS detector. Relative percentage amounts were calculated from FID by computer. Identification of compounds was carried out using the Baser Library of Essential Oil Constituents, Wiley, Adams, NIH and NIST libraries.

2.5. Cooled Injection System (CIS) Parameters

HP-Innowax silica capillary column (60 m x 0.25 mm i.d., with 0.25 µm film thickness) was used as pre-column. Injection in to the system was carried out at 40°C by using Cooled Injection System (CIS). After 0.5 min splitless and 0.5 min equilibrium time, split was applied to the system with 10:1 split ratio. Temperature was programmed to 300°C at a rate of 10°C/s and kept at this temperature for 2 min. GC oven temperature was kept at 60°C for 10 min and programmed rise to 220°C at a rate of 4°C/min, and kept constant at 220°C for 10 min and then programmed rise to 240°C at a rate of 1°C/min, and then kept constant at 220°C for 40 min.

2.6. Multi Column Switching (MCS) Pneumatic Parameters

Helium was used as a carrier gas. Make-up, split and desorption flows were 20 mL/min. Control flows 1 and 2 were 10 mL/min and 20 mL/min respectively.

2.6.1. CUT Parameters

Both of Cut 1 and Cut 2 were on while Cut 2 was with 20 kPa pressure in the beginning. In 30 min Cut 1 was off until 32.5 min.

Main column was Lipodex E, [*Octakis (3-O-butyryl-2,6-di-O-pentyl)-γ-cyclodextrin*], (70% in OV1701), (25 m x 0.25 mm i.d., 0.25 µm film thickness) (Prof. W. König, Hamburg, Germany). GC oven temperature was kept at 40°C for 34 min and programmed to 120°C at a rate of 1°C/min, and kept constant at 120°C for 6 min. MS were taken at 70 eV. Mass range was from *m/z* 35 to 450.

2.7. Cryo Trap System Parameters

Cryo trap was liquid nitrogen and transfer line and initial temperature was 250°C. Initial time was 29.5 min then it was cooled down to -100°C at a rate of 20°C/s. After 3.5 min then heated up to 240°C at a rate of 20°C/s. and kept at this temperature for 3 min.

2.8. Assays for Biological Activities

Antimicrobial and in vitro antimalarial assay procedures were utilized at the NCNPR, University of Mississippi. Antimicrobial activity was determined against *Candida albicans* (ATCC 90028), *Cryptococcus neoformans* (ATCC 90113), *Aspergillus fumigatus* (ATCC 90906), *Staphylococcus aureus* (ATCC 29213), methicillin-resistant *S. aureus* (ATCC 43300), *Pseudomonas aeruginosa* (ATCC 27853), and *Mycobacterium intracellulare* (ATCC 23068) using a modified version of the CLSI (Clinical and Laboratory Standards Institute) formerly NCCLS (National Committee for Clinical Laboratory Standards) methods [8-11] as reported previously [12]. Antimicrobial standards ciprofloxacin (ICN Biomedicals, Ohio) for bacteria and amphotericin B (ICN Biomedicals, Ohio) for fungi were included as positive control in each assay. In vitro antimalarial activity was determined against D6 (chloroquine sensitive) and W2 (chloroquine resistant) clones of

Plasmodium falciparum. The assay was based on the determination of parasite lactic acid dehydrogenase (LDH) activity using Malstat reagent and was performed as described previously by Tabanca *et al.* [12]. Chloroquine (Aldrich-Sigma, ST, Louis, MO) and artemisinin (Aldrich-Sigma, ST, Louis, MO) standards were included in each assay. Antifungal activity was evaluated against fungal plant pathogens at the USDA-ARS, NPURU, University of Mississippi. Azoxystrobin, benomyl, captan, and cyprodinil (Chem Service, Inc. West Chester, PA) were used as commercial fungicide standards. Each test fungicide and standard was run in duplicate at each concentration and the experiment was performed independently three times. 1D-bioautography (*Colletotrichum acutatum*, *C. fragariae* and *C. gloeosporioides*) and microtiter assays (*C. acutatum*, *C. fragariae*, *C. gloeosporioides*, *F. oxysporum*, *B. cinerea*, *P. obscurans*, and *P. viticola*) have been described in our previous papers [8-11]. Antimicrobial standards ciprofloxacin (ICN Biomedicals, Ohio) for bacteria and amphotericin B (ICN Biomedicals, Ohio) for fungi were included as positive control in each assay.

2.8.1. Direct Bioautography Assay for Activity Against Plant Pathogenic Fungi

Pathogen production and bioautography procedures of Tabanca *et al.* [12], Meazza *et al.* [13] and Fokialakis *et al.* [14] were used to evaluate antifungal activity against three fungal plant pathogenic *Colletotrichum* species. Sensitivity of each fungal species to each test compound was determined 4 day after treatment by comparing size of inhibitory zones, affording means and standard deviations of inhibitory zone size were used to evaluate antifungal activity of test compounds. Bioautography experiments were performed multiple times using both dose- and non-dose-response formats. Fungicide technical grade standards benomyl, cyprodinil, azoxystrobin, and captan (Chem Service, Inc. West Chester, PA) were used as controls at 2 mM in 2 μ L of 95% ethanol. Linalool enantiomers were applied at 4 and 8 μ L of 2 mM concentration in *n*-hexane.

2.8.2. Microdilution Broth Assay Against Plant Pathogenic Fungi

A standardized 96-well microtiter plate assay developed by Wedge and Kuhajek [15] and Tabanca *et al.* [12] was used to evaluate antifungal activity of isolated compounds against *Colletotrichum acutatum*, *C. fragariae*, *C. gloeosporioides*, *Fusarium oxysporum*, *Botrytis cinerea*, *Phomopsis obscurans* and *P. viticola*. Azoxystrobin, benomyl, captan, and cyprodinil were used as commercial fungicide standards. Each fungus was challenged in a dose-response format using test compounds where the preliminary treatment concentrations were 0.3, 3.0 and 30.0 μ M. Microtiter plates (Nunc MicroWell, untreated; Roskilde, Denmark) were covered with a plastic lid and incubated in a growth chamber as described previously. Fungal growth was then evaluated by measuring absorbance of each well at 620 nm using a microplate photometer (Packard Spectra Count, Packard Instrument Co., Downers Grove, IL). Mean growth inhibition and standard errors for each fungus at each dose of test compound were used to evaluate fungal growth. Each test fungicide and standard was run in duplicate at each concentration and the experiment was performed independently three times.

3. Results and Discussion

3.1. Enantiomeric distribution of linalool

The enantiometric distribution of linalool in essential oils from Apiaceae, Asteraceae, Lamiaceae, Lauraceae, Rutaceae and Zingiberaceae was determined on a Lipodex E fused silica chiral

capillary column using enantio-MDGC/MS, which allows a selective and sensitive analysis of the chiral compounds.

Relative percentages of linalool in essential oil showed a wide variation between genera. The highest content of linalool (90.3 %) was found in the linalool-chemotype *Origanum onites* oil while *Micromeria juliana* contained the lowest linalool (4.5 %) concentration among the essential oils studied (Table 2).

The non and chiral columns combination of the MDGC/MS system allowed a fast and exact determination of enantiomeric distribution of linalool (Figure 1). The average analysis time of linalool separation was about 2 hours including sample preparation. However, isolation of each enantiomer individually by column chromatography or TLC applications was more time consuming.

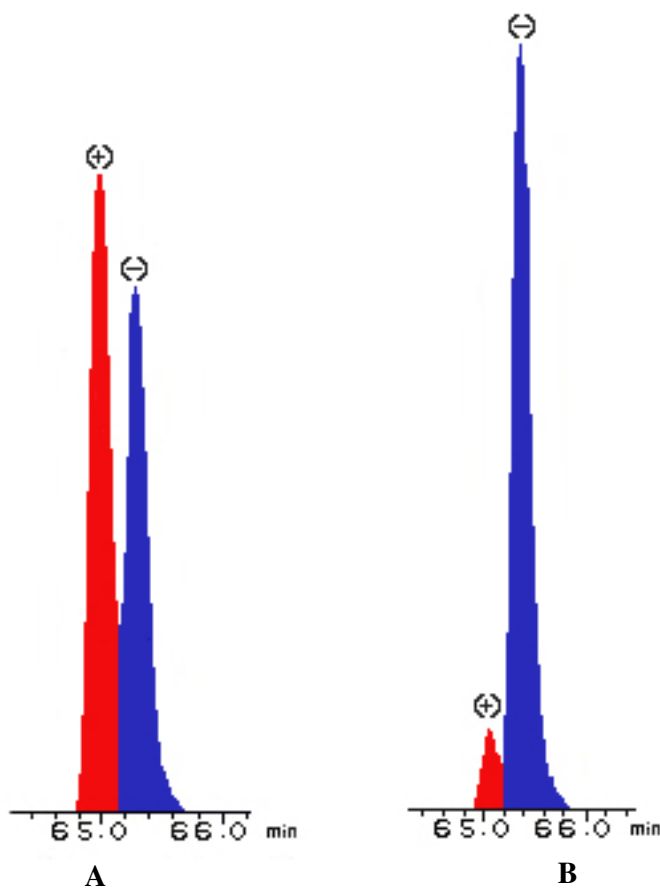


Figure 1. Enantiomeric separation of linalool (A) from *Salvia microstegia* (B) from *Lavandula angustifolia* oil.

Enantiomerically pure (+)-linalool was found in the essential oils of *Nepeta cadmea*, *Nepeta cataria*, *Nepeta conferta*, *Nepeta flavida*, *Nepeta italica*, *Satureja spinosa* and *Tanacetum chiliophyllum* var. *monocephalum*, while it was the predominant enantiomer in the essential oils of *Coriandrum sativum* (83.9 %) and *Elettaria cardamomum* (76.9 %) (Table 2).

Table 2. The Relative quantity (%) and enantiomeric composition (%) of linalool in lab-distilled and commercial essential oil samples

Plant name	Linalool in the oil (%)	(+)-Linalool (%)	(-)-Linalool (%)
<i>Achillea grandifolia</i> Friv.	18.1	-	100
<i>Achillea millefolium</i> L.	5.5	3.3	96.7
<i>Ballota sechmenii</i> Gemici & Leblebici	5.0	26.9	73.1
<i>Calamintha tauricola</i> P.H. Davis	5.1	17.3	82.7
<i>Cinnamomum tamala</i> (Buch.-Ham.) T.Nees & C.H.Eberm.	13.4	9.0	91.0
<i>Coriandrum sativum</i> L.	73.7	83.9	16.1
<i>Elettaria cardamomum</i> Maton	8.7	76.9	23.1
<i>Hedychium flavum</i> Roxb.	19.2	3.4	96.6
<i>Lavandula angustifolia</i> Mill.	30.4	5.9	94.1
<i>Micromeria juliana</i> (L.) Benth. ex Reichb.	4.5	3.3	96.7
<i>Nepeta cadmea</i> Boiss.	13.5	100	-
<i>Nepeta cataria</i> L.	20.5	100	-
<i>Nepeta conferta</i> I.C. Hedge & J.M. Lamond	11.4	100	-
<i>Nepeta flavida</i> A. Huber-Morath.	37.7	100	-
<i>Nepeta italica</i> L.	39.9	100	-
<i>Ocimum basilicum</i> L.	43.1	-	100
	29.0	-	100
	18.5	-	100
<i>Origanum floribundum</i> Munby	16.1	-	100
<i>Origanum majorana</i> L.	12.1	-	100
	41.2	-	100
<i>Origanum micranthum</i> Hort. ex Colla	10.9	14.0	86.0
<i>Origanum onites</i> L.	90.3	1.6	98.4
	79.8	-	100
<i>Salvia microstegia</i> Boiss. & Bal	9.0	52.4	47.6
<i>Salvia multicaulis</i> Vahl	11.9	17.2	82.8
<i>Salvia palaestina</i> Benth.	70.6	17.8	82.2
<i>Salvia sclarea</i> L.	13.3	23.7	76.3
<i>Salvia trichoclada</i> Benth.	25.6	12.4	87.6
<i>Salvia viridis</i> L.	12.7	32.4	67.6
<i>Satureja pilosa</i> Velen.	35.7	41.0	59.0
<i>Satureja spinosa</i> L.	61.5	100	-

Plant name	Linalool in the oil (%)	(+)-Linalool (%)	(-)-Linalool (%)
<i>Stachys antalyensis</i> Y. Ayasligil & P.H. Davis	24.4	59.9	40.1
<i>Tanacetum chiliophyllum</i> Sch. Bip. var. <i>monocephalum</i> Grierson	10.3	100	-
<i>Thymus cherlerioides</i> Vis.	12.5	0.1	99.9
<i>Thymus fedtschenkoi</i> Ronniger var. <i>handelii</i> (Ronniger) Jalas	12.9	-	100
<i>Thymus leucostomus</i> Hausskn. & Velen. var. <i>argillaceus</i> Jalas	18.1	0.6	99.4
<i>Thymus leucostomus</i> Hausskn. & Velen. var. <i>leucostomus</i>	12.3	0.1	99.9
<i>Thymus longicaulis</i> C. Presl ssp. <i>longicaulis</i> var. <i>subisophyllum</i>	18.2	30.3	69.7
<i>Thymus migricus</i> Klokov & Des. -Shost.	9.7	-	100
<i>Thymus praecox</i> Opiz var. <i>arcticus</i> (Durand) T. Karlsson	18.4	21.0	79.0
<i>Thymus pseudopulegioides</i> Klakov & Des.-Shost.	21.6	6.7	93.3
<i>Thymus revolutus</i> Celak.	15.5	-	100
<i>Thymus sibthorpii</i> Benth.	20.4	-	100
<i>Thymus zygioides</i> Griseb. var. <i>zygioides</i>	33.7	-	100
<i>Xanthoxylum armatum</i> D.C.	46.1	-	100

Enantiomerically pure (-)-linalool was found in the essential oils of *Achillea grandifolia*, *Ocimum basilicum*, *Origanum floribundum*, *Origanum majorana*, *Origanum onites*, *Thymus fedtschenkoi* var. *handelii*, *Thymus migricus*, *Thymus revolutus*, *Thymus sibthorpii*, *Thymus zygioides* var. *zygioides* and *Xanthoxylum armatum*, while (-)-linalool was the predominant enantiomer in the essential oils of *Thymus leucostomus* var. *leucostomus* (99.9 %), *Thymus cherlerioides* (99.9 %) and *Thymus leucostomus* var. *argillaceus* (99.4 %) (Table 2).

(-)-Linalool occurred in the range of 67.6% to 98.4% in the oils of *Achillea millefolium*, *Ballota sechmenii*, *Calamintha tauricola*, *Cinnamomum tamala*, *Hedychium flavum*, *Lavandula x intermedia*, *Micromeria juliana*, *Origanum micranthum*, *Origanum onites*, *Salvia multicaulis*, *Salvia palaestina*, *Salvia sclarea*, *Salvia trichoclada*, *Salvia viridis*, *Thymus longicaulis* ssp. *longicaulis*, *Thymus praecox* var. *arcticus* and *Thymus pseudopulegioides*.

Linalool was almost racemic in the oils of *Salvia microstegia* [52.4 % -(+)], *Satureja pilosa* [59.0 % -(-)] and *Stachys antalyensis* [59.9 % -(+)].

The enantiomeric distribution of linalool showed that both enantiomers are found in the nature but (-)-linalool was more common than (+)-linalool in the essential oils in the study samples. In the literature there are enantiomeric distribution of linalool from different sources. [16-40]. Although, there is no exact rule for purity of enantiomers in any family members, some of the genus like *Nepeta*, *Origanum*, *Thymus* etc. were rich in only one enantiomer in our study. The enantiomeric distributions of some enantiomers were found to be useful in the quality assessment of the essential oils. Linalool is one of the good criteria to make a decision about the origin of the oil (natural or synthetic) [40].

3.2. Biological activity of (-) and (+)-linalool enantiomers

Pure enantiomers can have different activity or odour properties from each other. Literature citation shows that there are some studies on the biological activities of linalool enantiomers [41-49]. One of the literature is reviewing the biological activity of linalool as a commercially important compound [43]. The essential oils which contain only pure enantiomer can be used for isolation purposes. In this case, these properties can be evaluated separately by using single pure enantiomer.

As part of our effort to investigate the biological activity of natural products and their pure compounds, we evaluated (-) and (+)-linalool enantiomers for their antimalarial and antimicrobial activities against human and plant pathogenic microorganisms. Antifungal activity against strawberry anthracnose disease (*Colletotrichum* spp.) was evaluated using direct-bioautography assay. Antifungal activity was evident by the presence of clear zones with a dark background where fungal mycelia or reproductive stroma was not present on the TLC plate. No activity was observed at 20 mg/mL, using a 4 and 8 μ L test volume, against *Colletotrichum acutatum*, *C. fragariae*, *C. gloeosporioides*, as compared with the commercial fungicide standards. We also subsequently evaluated both linalool enantiomers in our secondary assay (96-well micro-dilution broth assay) against seven fungal species. The 96-well micro-dilution assay was used to determine sensitivity of *C. acutatum*, *C. fragariae*, *C. gloeosporioides*, *F. oxysporum*, *B. cinerea*, *P. obscurans*, and *P. viticola* to the various antifungal agents in comparison with the commercial fungicides. In the micro-dilution broth assay caused 0.3 μ M (+)-linalool and (-)-linalool demonstrated approximately 50% growth inhibition of *Botrytis cinerea* at 48 hrs (Figure 2). Both enantiomers showed no activity against any of the three *Colletotrichum* species, *Phomopsis* species, and *Fusarium oxysporum*. However, the upward trending growth curve of micro-dilution broth assay indicated that both enantiomers may be insoluble in the aqueous based environment above 0.3 μ M and as the concentration increases to 3.0 μ M and then 30.0 μ M the spectrophotometer can not differentiate fungal growth from chemical precipitation. This in vitro assay anomaly is also seen with the cyprodinil control. No antimicrobial activity was observed at the highest test concentration of 200 μ g/mL against *Candida albicans*, *C. glabrata*, *C. krusei*, *Cryptococcus neoformans*, methicillin-resistant *Staphylococcus aureus*, *Mycobacterium intracellulare* and *Aspergillus fumigatus*. Both enantiomers were inactive up to 4.76 μ g/mL against *Plasmodium falciparum* D6 (chloroquine sensitive) and W2 (chloroquine resistant) clones.

***B. cinerea* Growth Response to Samples at 48 hrs.**

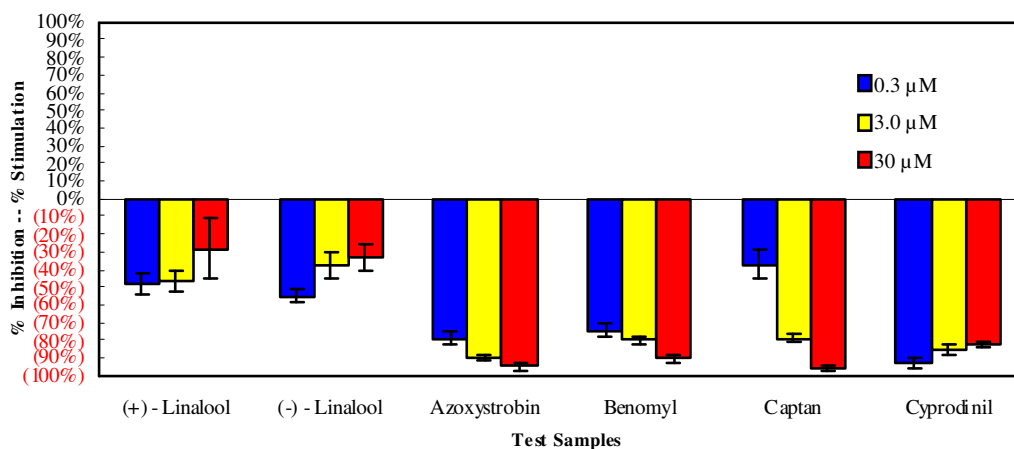


Figure 2. Percent mean growth inhibition of Linalool enantiomers against *Botrytis cinerea* at 48 hrs.

Acknowledgments

Authors would like to thank S. Alan, I. Aslanyürek, E.S. Biskup, I. Chaudhary, H. Duman, N. Gören, M. Koyuncu, Ş. Küsmenoğlu, Ş. Nacar, G. Tümen, B. Yıldız and late Prof. T. Baytop for supplying samples. The authors thank Ms. J. Linda Robertson, Mr. M. Dewayne Harries and Ms. Bethany Case for assistance with the bioautography and microdilution broth assays and the USDA ARS NPURU for financial support. We also thank Dr. Shabana I. Khan, Dr. Melissa R. Jacob, Mr. John Trott, Ms. Marsha Wright for their contributions in performing antimalarial and antimicrobial assays, which was supported by the NIH, NIAID, Division of AIDS, grant no.AI 27094.

References

- [1] E.L. Eliel and S.H. Willen (1993). Stereochemistry of Organic Compounds, John Wiley and Sons, New York, pp. 49-70.
- [2] V.M. Patapov (1978). Stereochemistry, MIR Publishers, Moscow, pp.37-41.
- [3] The Merck Index (1989). Eleventh Edition, Merck & Co., Inc., Rahway, N.J., USA.
- [4] K. Bauer, D. Gabe and H. Surburg (1990). Common Fragrance and Flavor Materials, VCH Verlagsgesellschaft mbH, Weinheim, Germany, pp. 22-25.
- [5] Chemical Codex (1996). Fourth Edition, National Academy Press, Washington D.C., pp. 466-467.
- [6] S. Arctander (1969). Perfume and Flavor Chemicals (Aroma Chemicals) II, Det Hoffensbergske Etablissement, Copenhagen V.,Denmark, 1803:Linalool.
- [7] NAPRALERT search results (2007).
- [8] NCCLS (National Committee for Clinical Laboratory Standards) (2000). Susceptibility testing of Mycobacteria, Nocardia, and Other Aerobic Actinomycetes; Tentative Standard-Second Edition, M24-T2. *National Committee on Clinical Laboratory Standards*, **20** (26).
- [9] NCCLS (National Committee for Clinical Laboratory Standards) (2000). Methods for dilution antimicrobial susceptibility tests for bacteria that grow aerobically M7-A5. *National Committee on Clinical Laboratory Standards*, **20** (2).
- [10] NCCLS (National Committee for Clinical Laboratory Standards) (2002). Reference method for broth dilution antifungal susceptibility testing of yeasts; Approved Standard M27-A2. *National Committee on Clinical Laboratory Standards*, **22**(15).
- [11] NCCLS (National Committee for Clinical Laboratory Standards) (2002). Reference method for broth dilution antifungal susceptibility testing of filamentous fungi; Approved Standard, M38-A. *National Committee on Clinical Laboratory Standards*, **22** (16).
- [12] N. Tabanca, E. Bedir, D. Ferraira, D. Slade, D.E. Wedge, M.R. Jacob, S.I. Khan, N. Kirimer, K.H.C. Başer and I.A. Khan (2005). Bioactive constituents from Turkish *Pimpinella* species, *Chem. Biodiv.* **2**, 221-232.
- [13] G. Meazza, F.E. Dayan, D.E. Wedge (2003). Activity of quinones against Colletotrichum species, *J. Agric. Food Chem.* **51**, 3824-3828.
- [14] N. Fokialakis, C.L. Cantrell, S.O. Duke, A.L. Skaltsounis and D.E. Wedge (2006). Antifungal activity of thiophenes from *Echinops ritro*, *J. Agric. Food Chem.*, **54**, 1651-1655.
- [15] D.E. Wedge and J.M. Kuhajek (1998). A microbioassay for fungicide discovery, *SAAS Bull. Biochem. & Biotech*, **11**, 1-7.
- [16] U. Ravid, E. Putievsky, I. Katzir and E. Lewinsohn (1997). Enantiomeric composition of linalool in the essential oils of *Ocimum* species and in commercial basil oils, *Flavour Fragr. J.* **12**(4), 293-296.
- [17] D. Bisht, C.S. Chanotiya, M. Rana and M. Semwal (2009). Variability in essential oil and bioactive chiral monoterpenoid compositions of Indian oregano (*Origanum vulgare* L.) populations from northwestern Himalaya and their chemotaxonomy, *Ind. Crops Prod.* **30**(3), 422-426.
- [18] C. S. Chanotiya and A. Yadav (2009). Enantiomeric Composition of (3R)-(-)- and (3S)-(+)-Linalool in Various Essential Oils of Indian Origin by Enantioselective Capillary Gas Chromatography-Flame Ionization and Mass Spectrometry Detection Methods, *Nat. Prod. Comm.* **4**(4), 563-566.
- [19] R. Zawirska-Wojtasiak and E. Wasowicz (2009). GC Analysis of Rosemary Aroma Isolated Traditionally by Distillation and by SPME, *J. Essent. Oil Res.* **21**(1), 8-15.

- [20] H. Y. Seo, S. L. Shim, K. Y. Ryu, M. S. Jung, I. M. Hwang, D. Bin Shin, J. H. Kwon, P. Schreier and K. S. Kim (2009). Analysis of Volatile Compounds and Enantiomeric Separation of Chiral Compounds of Dried Sancho (*Zanthoxylum schinifolium* Siebold & Zucc), *Food Sci. Biotech.*, **18**(1), 18-24.
- [21] A. J. Matich, B. J. Bunn and M. B. Hunt (2010). The Enantiomeric Composition of Linalool and Linalool Oxide in the Flowers of Kiwifruit (*Actinidia*) Species, *Chirality* **22**(1), 110-119.
- [22] H. Casabianca, J. B. Graff, V. Faugier and F. Fleig (1998). Enantiomeric distribution studies of linalool and linalyl acetate - A powerful tool for authenticity control of essential oils, *J. High Res. Chrom.*, **21**(2), 107-112.
- [23] D. M. Wang, K. Ando, K. Morita, K. Kubota and A. Kobayashi (1994). Optical Isomers of linalool and linalool oxides in tea aroma, *Biosci. Biotech. Biochem.* **58**(11), 2050-2053.
- [24] C. Askari, U. Hener, H. G. Schmarr, A. Rapp and A. Mosandl (1991). Stereodifferentiation of some chiral monoterpenes using multidimensional Gas-Chromatography, *Fresen. J. Anal. Chem.* **340**(12), 768-772.
- [25] D. Lorenzo, E. Dellacassa, I. Bonaccorsi and L. Mondello (2001). Uruguayan essential oils. Composition of leaf oil of *Myrcianthes cisplatensis* (Camb.) Berg. ('Guayabo colorado') (Myrtaceae), *Flavour Fragr. J.* **16**(2), 97-99.
- [26] B. Bonnlander, R. Cappuccio, F. S. Liverani and P. Winterhalter (2006). Analysis of enantiomeric linalool ratio in green and roasted coffee, *Flavour Fragr. J.* **21**(4), 637-641.
- [27] H. Takeuchi, Y. Ubukata, M. Hanafusa, S. Hayashi and S. Hashimoto (2005). Volatile constituents of calamondin peel and juice (*Citrus madurensis* Lour.) cultivated in the Philippines, *J. Essent. Oil Res.* **17**(1), 23-26.
- [28] P. Dugo, L. Mondello, G. Zappia, I. Bonaccorsi, A. Cotroneo and M. T. Russo (2004). The composition of the volatile fraction and the enantiomeric distribution of five volatile components of faustrime oil (*Monocitrus australatica* x *Fortunella* sp x *Citrus aurantiifolia*), *J. Essent. Oil Res.* **16**(4), 328-333.
- [29] D. Lorenzo, D. Paz, P. Davies, J. Villamil, R. Vila, S. Canigueral and E. Dellacassa (2004). Characterization and enantiomeric distribution of some terpenes in the essential oil of a Uruguayan biotype of *Salvia sclarea* L., *Flavour Fragr. J.* **19**(4): 303-307.
- [30] C. D. Frizzo, D. Lorenzo and E. Dellacassa (2004). Composition and seasonal variation of the essential oils from two mandarin cultivars of southern Brazil, *J. Agric. Food Chem.* **52**(10), 3036-3041.
- [31] M. L. R. Del Castillo, M. M. Caja, G. P. Blanch and M. Herraiz (2003). Chiral evaluation of aroma-active compounds in real complex samples, *J. Food Sci.* **68**(3), 770-774.
- [32] D. Lorenzo, I. Loayza and E. Dellacassa (2003). Composition of the essential oils from leaves of two *Hedyosmum* spp. from Bolivia, *Flavour Fragr. J.* **18**(1), 32-35.
- [33] M. L. R. del Castillo and G. Dobson (2002). Varietal differences in terpene composition of blackcurrant (*Ribes nigrum* L) berries by solid phase microextraction/gas chromatography, *J. Sci. Food Agric.* **82**(13), 1510-1515.
- [34] A. C. Siani, M. R. R. Tappin, M. F. S. Ramos, J. L. Mazzei, M. Conceicao, K. V. Ramos, F. R. D. Neto and N. Frighetto (2002). Linalool from *Lippia alba*: Study of the reproducibility of the essential oil profile and the enantiomeric purity, *J. Agric. Food Chem.* **50**(12), 3518-3521.
- [35] S. B. Mitiku, M. Sawamura, S. M. Njoroge and H. Koaze (2002). Analytical discrimination of the cold-pressed oils of mandarins and their hybrids, *J. Essent. Oil Res.* **14**(3), 196-202.
- [36] D. Lorenzo, G. Saavedra, I. Loayza and E. Dellacassa (2001). Composition of the essential oil of *Erechtites hieracifolia* from Bolivia, *Flavour Fragr. J.*, **16**(5), 353-355.
- [37] D. Lorenzo, D. Paz, P. Davies, R. Vila, S. Canigueral and E. Dellacassa (2001). Composition of a new essential oil type of *Lippia alba* (Mill.) NE Brown from Uruguay, *Flavour Fragr. J.* **16**(5), 356-359.
- [38] D. Lorenzo, E. Dellacassa, L. Atti-Serafini, A. C. Santos, C. Frizzo, N. Paroul, P. Moyna, L. Mondello and G. Dugo (2000). Composition and stereoanalysis of *Cymbopogon winterianus* Jowitt oil from Southern Brazil, *Flavour Fragr. J.* **15**(3), 177-181.
- [39] A. Verzera, A. Trozzi, A. Cotroneo, D. Lorenzo and E. Dellacassa (2000). Uruguayan essential oil. 12. Composition of Nova and Satsuma mandarin oils, *J. Agric. Food Chem.* **48**(7), 2903-2909.
- [40] E. N. C. Renaud, D. J. Charles and J. E. Simon (2001). Essential oil quantity and composition from 10 cultivars of organically grown lavender and lavandin, *J. Essen. Oil Res.* **13**(4): 269-273.
- [41] E. Simionatto, C. Porto, C. Z. Stuker, I. I. Dalcol and U. F. da Silva (2007). Chemical composition and antimicrobial activity of the essential oil from *Aeolanthus suaveolens* Mart. ex Spreng, *Quimica Nova* **30**(8), 1923-1925.

- [42] T. Sakurada, H. Kuwahata, S. Katsuyama, T. Komatsu, L. A. Morrone, M. T. Corasaniti, G. Bagetta and S. Sakurada (2009). Intraplantar Injection of Bergamot Essential Oil into the Mouse Hindpaw: Effects on Capsaicin-Induced Nociceptive Behaviors, *Adv. Neuropharm.* **85**, 237-248.
- [43] G. P. P. Kamatou and A. M. Viljoen (2008). Linalool - A review of a biologically active compound of commercial importance, *Nat. Prod. Commun.* **3**(7), 1183-1192.
- [44] F. C. Ziegenbein, H. P. Hanssen and W. A. König (2006). Secondary metabolites from *Ganoderma lucidum* and *Spongiporus leucomallellus*, *Phytochemistry* **67**(2), 202-211.
- [45] R. L. van Zyl, S. T. Seatlholo, S. F. van Vuuren and A. M. Viljoen (2006). The biological activities of 20 nature identical essential oil constituents, *J. Essent. Oil Res.* **18**, 129-133.
- [46] A. T. Peana, P. S. D'Aquila, F. Panin, G. Serra, P. Pippia and M. D. L. Moretti (2002). Anti-inflammatory activity of linalool and linalyl acetate constituents of essential oils, *Phytomed.* **9**(8), 721-726.
- [47] A. T. Peana, P. S. D'Aquila, M. L. Chessa, M. D. L. Moretti, G. Serra and P. Pippia (2003). (-)-Linalool produces antinociception in two experimental models of pain, *Eur. J. Pharmacol.* **460**(1), 37-41.
- [48] A. T. Peana, A. G. De Montis, E. Nieddu, M. T. Spano, P. S. D'Aquila and P. Pippia (2004). Profile of spinal and supra-spinal antinociception of (-)-linalool, *Eur. J. Pharmacol.* **485**(1-3), 165-174.
- [49] A. T. Peana, P. Rubattu, G. G. Piga, S. Fumagalli, G. Boatto, P. Pippia and M. G. De Montis (2006). Involvement of adenosine A1 and A2A receptors in (-)-linalool-induced antinociception, *Life Sciences* **78**(21), 2471-2474.

A C G
publications

© 2010 Reproduction is free for scientific studies